

**Product Name: KANK2 Rabbit Polyclonal Antibody**  
**Catalog #: APRab12893**



## Summary

<b>Production Name</b>	KANK2 Rabbit Polyclonal Antibody
<b>Description</b>	Rabbit Polyclonal Antibody
<b>Host</b>	Rabbit
<b>Application</b>	IHC-P,IF-P,IF-F,ICC/IF,ELISA
<b>Reactivity</b>	Human,Rat,Mouse

## Performance

<b>Conjugation</b>	Unconjugated
<b>Modification</b>	Unmodified
<b>Isotype</b>	IgG
<b>Clonality</b>	Polyclonal
<b>Form</b>	Liquid
<b>Storage</b>	Store at 4°C short term. Aliquot and store at -20°C long term. Avoid freeze/thaw cycles.
<b>Buffer</b>	Liquid in PBS containing 50% glycerol, 0.5% BSA and 0.02% New type preservative N.
<b>Purification</b>	Affinity purification

## Immunogen

<b>Gene Name</b>	KANK2
<b>Alternative Names</b>	KANK2; ANKRD25; KIAA1518; MXRA3; SIP; KN motif and ankyrin repeat domain-containing protein 2; Ankyrin repeat domain-containing protein 25; Matrix-remodeling-associated protein 3; SRC-1-interacting protein; SIP; SRC-interacting protein; SRC
<b>Gene ID</b>	25959.0
<b>SwissProt ID</b>	Q63ZY3.The antiserum was produced against synthesized peptide derived from human KANK2. AA range:351-400

## Application

<b>Dilution Ratio</b>	IHC-P 1:100-1:300, IF-P/IF-F/ICC/IF 1:200-1:1000, ELISA 1:40000.Not yet tested in other
-----------------------	---

**Product Name: KANK2 Rabbit Polyclonal Antibody**  
**Catalog #: AP Rab12893**



applications.

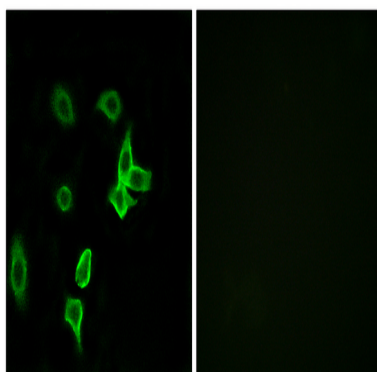
#### **Molecular Weight**

### **Background**

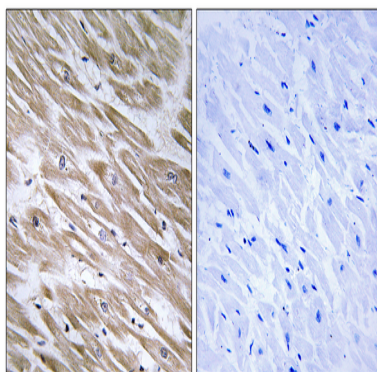
This gene encodes a member of the KN motif and ankyrin repeat domains (KANK) family of proteins, which play a role in cytoskeletal formation by regulating actin polymerization. The encoded protein functions in the sequestration of steroid receptor coactivators and possibly other proteins. Mutations in this gene are associated with impaired kidney podocyte function and nephrotic syndrome, and keratoderma and woolly hair. [provided by RefSeq, Jul 2016],PTM:Phosphorylated upon DNA damage, probably by ATM or ATR.,similarity:Contains 5 ANK repeats.,tissue specificity:Strongly expressed in cervix, colon, heart, kidney and lung.,

### **Research Area**

### **Image Data**



Immunofluorescence analysis of A549 cells, using KANK2 Antibody. The picture on the right is blocked with the synthesized peptide.



Immunohistochemistry analysis of paraffin-embedded human heart tissue, using KANK2 Antibody. The picture on the right is blocked with the synthesized peptide.

**Product Name: KANK2 Rabbit Polyclonal Antibody**  
**Catalog #: APRab12893**

---



**Note**

For research use only.