

**Product Name: Jun B Rabbit Polyclonal Antibody**  
**Catalog #: APRab12852**



## Summary

<b>Production Name</b>	Jun B Rabbit Polyclonal Antibody
<b>Description</b>	Rabbit Polyclonal Antibody
<b>Host</b>	Rabbit
<b>Application</b>	WB,IHC-P,IF-P,IF-F,ICC/IF,IP,ELISA
<b>Reactivity</b>	Human,Mouse

## Performance

<b>Conjugation</b>	Unconjugated
<b>Modification</b>	Unmodified
<b>Isotype</b>	IgG
<b>Clonality</b>	Polyclonal
<b>Form</b>	Liquid
<b>Storage</b>	Store at 4°C short term. Aliquot and store at -20°C long term. Avoid freeze/thaw cycles.
<b>Buffer</b>	Liquid in PBS containing 50% glycerol, 0.5% BSA and 0.02% New type preservative N.
<b>Purification</b>	Affinity purification

## Immunogen

<b>Gene Name</b>	JUNB
<b>Alternative Names</b>	JUNB; Transcription factor jun-B
<b>Gene ID</b>	3726.0
<b>SwissProt ID</b>	P17275.The antiserum was produced against synthesized peptide derived from human JunB. AA range:226-275

## Application

<b>Dilution Ratio</b>	WB 1:500-1:2000, IHC-P 1:100-1:300, Immunoprecipitation 2-5 ug/mg lysate, ELISA 1:20000, IF-P/IF-F/ICC/IF 1:50-200
<b>Molecular Weight</b>	36kDa

**Product Name: Jun B Rabbit Polyclonal Antibody**  
**Catalog #: APRab12852**

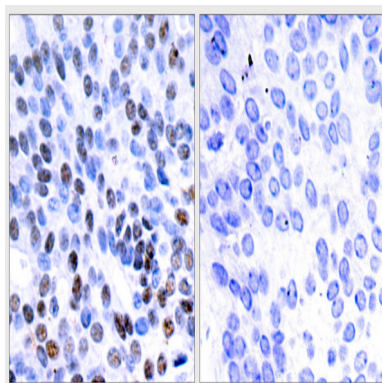


## Background

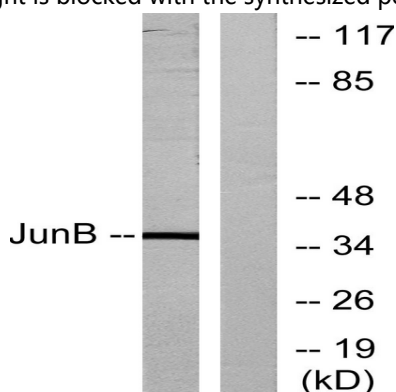
function: Transcription factor involved in regulating gene activity following the primary growth factor response. Binds to the DNA sequence 5'-TGA[CG]TCA-3', induction: By growth factors., similarity: Belongs to the bZIP family., similarity: Belongs to the bZIP family. Jun subfamily., similarity: Contains 1 bZIP domain., subunit: Binds DNA as an homodimer or as an heterodimer with another member of the jun/fos family., function: Transcription factor involved in regulating gene activity following the primary growth factor response. Binds to the DNA sequence 5'-TGA[CG]TCA-3', induction: By growth factors., similarity: Belongs to the bZIP family., similarity: Belongs to the bZIP family. Jun subfamily., similarity: Contains 1 bZIP domain., subunit: Binds DNA as an homodimer or as an heterodimer with another member of the jun/fos family.,

## Research Area

## Image Data

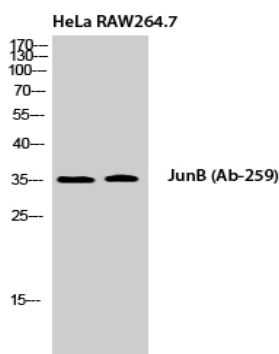


Immunohistochemistry analysis of paraffin-embedded human breast carcinoma tissue, using JunB Antibody. The picture on the right is blocked with the synthesized peptide.



Western blot analysis of lysates from HeLa cells, using JunB Antibody. The lane on the right is blocked with the synthesized peptide.

**Product Name: Jun B Rabbit Polyclonal Antibody**  
**Catalog #: APRab12852**



Western Blot analysis of HeLa RAW264.7 cells using Jun B Polyclonal Antibody cells nucleus extracted by Minute TM  
Cytoplasmic and Nuclear Fractionation kit (SC-003, Inventbiotech, MN, USA) .

### **Note**

For research use only.