

## Summary

<b>Production Name</b>	JNK2 Rabbit Polyclonal Antibody
<b>Description</b>	Rabbit Polyclonal Antibody
<b>Host</b>	Rabbit
<b>Application</b>	WB,IHC-P,IF-P,IF-F,ICC/IF,ELISA
<b>Reactivity</b>	Human,Mouse,Rat

## Performance

<b>Conjugation</b>	Unconjugated
<b>Modification</b>	Unmodified
<b>Isotype</b>	IgG
<b>Clonality</b>	Polyclonal
<b>Form</b>	Liquid
<b>Storage</b>	Store at 4°C short term. Aliquot and store at -20°C long term. Avoid freeze/thaw cycles.
<b>Buffer</b>	Liquid in PBS containing 50% glycerol, 0.5% BSA and 0.02% New type preservative N.
<b>Purification</b>	Affinity purification

## Immunogen

<b>Gene Name</b>	MAPK9 MAPK9; JNK2; PRKM9; SAPK1A; Mitogen-activated protein kinase 9; MAP kinase 9;
<b>Alternative Names</b>	MAPK 9; JNK-55; Stress-activated protein kinase 1a; SAPK1a; Stress-activated protein kinase JNK2; c-Jun N-terminal kinase 2
<b>Gene ID</b>	5601.0
<b>SwissProt ID</b>	P45984.The antiserum was produced against synthesized peptide derived from human MAPK9. AA range:246-295

## Application

<b>Dilution Ratio</b>	WB 1:500-1:2000, IHC-P 1:100-1:300, ELISA 1:10000, IF-P/IF-F/ICC/IF 1:50-200
<b>Molecular Weight</b>	48kDa

## Background

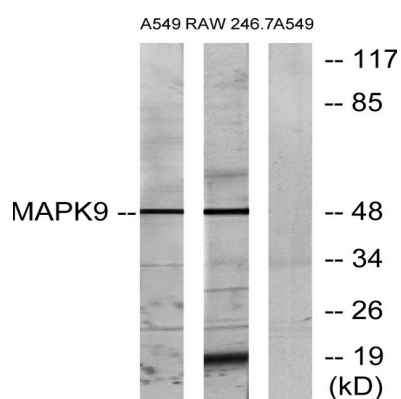
The protein encoded by this gene is a member of the MAP kinase family. MAP kinases act as an integration point for multiple biochemical signals, and are involved in a wide variety of cellular processes such as proliferation, differentiation, transcription regulation and development. This kinase targets specific transcription factors, and thus mediates immediate-early gene expression in response to various cell stimuli. It is most closely related to MAPK8, both of which are involved in UV radiation induced apoptosis, thought to be related to the cytochrome c-mediated cell death pathway. This gene and MAPK8 are also known as c-Jun N-terminal kinases. This kinase blocks the ubiquitination of tumor suppressor p53, and thus it increases the stability of p53 in nonstressed cells. Studies of this gene's mouse counterpart suggest a key role in T-cell differentiation. Several alternative catalytic activity: ATP + a protein = ADP + a phosphoprotein., cofactor: Magnesium., domain: The TXY motif contains the threonine and tyrosine residues whose phosphorylation activates the MAP kinases., enzyme regulation: Activated by threonine and tyrosine phosphorylation by either of two dual specificity kinases, MAP2K4 and MAP2K7. Inhibited by dual specificity phosphatases, such as DUSP1., function: JNK2 isoforms display different binding patterns: alpha-1 and alpha-2 preferentially bind to c-Jun, whereas beta-1 and beta-2 bind to ATF2. However, there is no correlation between binding and phosphorylation, which is achieved at about the same efficiency by all isoforms. JUNB is not a substrate for JNK2 alpha-2, and JUND binds only weakly to it., function: Responds to activation by environmental stress and pro-inflammatory cytokines by phosphorylating a number of transcription factors, primarily components of AP-1 such as c-Jun and ATF2 and thus regulates AP-1 transcriptional activity. In T-cells, JNK1 and JNK2 are required for polarized differentiation of T-helper cells into Th1 cells., PTM: Dually phosphorylated on Thr-183 and Tyr-185, which activates the enzyme. Autophosphorylated in vitro., similarity: Belongs to the protein kinase superfamily. CMGC Ser/Thr protein kinase family. MAP kinase subfamily., similarity: Contains 1 protein kinase domain., subunit: Binds to at least four scaffolding proteins, MAPK8IP1/JIP-1, MAPK8IP2/JIP-2, MAPK8IP3/JIP-3/JAP1 and SPAG9/MAPK8IP4/JIP-4. These proteins also bind other components of the JNK signaling pathway. Interacts with NFATC4.,

## Research Area

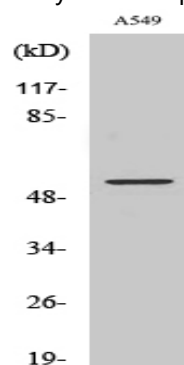
Toll\_Like; Cell Growth; Stem cell pathway; Insulin Receptor; MAPK\_ERK\_Growth; MAPK\_G\_Protein; ErbB/HER; B Cell Receptor; SAPK\_JNK; WNT; WNT-T CELL;  $\beta$ -Catenin

## Image Data

**Product Name: JNK2 Rabbit Polyclonal Antibody**  
**Catalog #: APRab12846**



Western blot analysis of lysates from A549 and RAW264.7 cells, using MAPK9 Antibody. The lane on the right is blocked with the synthesized peptide.



Western Blot analysis of various cells using JNK2 Polyclonal Antibody

## Note

For research use only.