

## Summary

<b>Production Name</b>	JMY Rabbit Polyclonal Antibody
<b>Description</b>	Rabbit Polyclonal Antibody
<b>Host</b>	Rabbit
<b>Application</b>	WB,ELISA,IHC-P
<b>Reactivity</b>	Human,Mouse

## Performance

<b>Conjugation</b>	Unconjugated
<b>Modification</b>	Unmodified
<b>Isotype</b>	IgG
<b>Clonality</b>	Polyclonal
<b>Form</b>	Liquid
<b>Storage</b>	Store at 4°C short term. Aliquot and store at -20°C long term. Avoid freeze/thaw cycles.
<b>Buffer</b>	Liquid in PBS containing 50% glycerol, 0.5% BSA and 0.02% New type preservative N.
<b>Purification</b>	Affinity purification

## Immunogen

<b>Gene Name</b>	JMY
<b>Alternative Names</b>	JMY; Junction-mediating and -regulatory protein
<b>Gene ID</b>	133746.0
<b>SwissProt ID</b>	Q8N9B5.The antiserum was produced against synthesized peptide derived from human JMY. AA range:931-980

## Application

<b>Dilution Ratio</b>	WB 1:500-2000, IHC-P 1:50-300, ELISA 2000-20000
<b>Molecular Weight</b>	130kDa

## Background

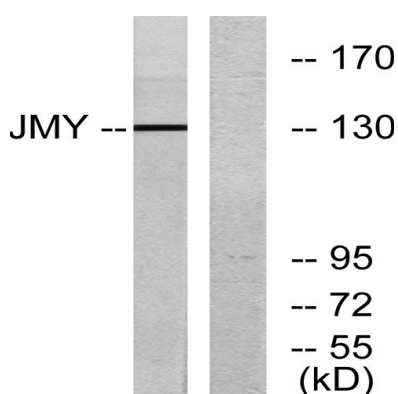
**Product Name: JMY Rabbit Polyclonal Antibody**  
**Catalog #: APRab12840**



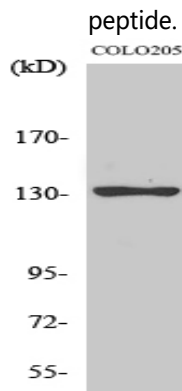
function:Cofactor that increases p53/TP53 response via its interaction with p300/EP300. Increases p53/TP53-dependent transcription and apoptosis, suggesting an important role in p53/TP53 stress response such as DNA damage.,induction:By E2F.,PTM:Ubiquitinated by MDM2, leading to its subsequent degradation by the proteasome. In case of DNA damage, the interaction with MDM2 is altered, preventing degradation and allowing interaction with p300/EP300 and its function in p53/TP53 stress response.,similarity:Contains 1 WH2 domain.,subunit:Interacts with p300/EP300, the complex being recruited to activated p53/TP53. Interacts with TTC5.,function:Cofactor that increases p53/TP53 response via its interaction with p300/EP300. Increases p53/TP53-dependent transcription and apoptosis, suggesting an important role in p53/TP53 stress response such as DNA damage.,induction:By E2F.,PTM:Ubiquitinated by MDM2, leading to its subsequent degradation by the proteasome. In case of DNA damage, the interaction with MDM2 is altered, preventing degradation and allowing interaction with p300/EP300 and its function in p53/TP53 stress response.,similarity:Contains 1 WH2 domain.,subunit:Interacts with p300/EP300, the complex being recruited to activated p53/TP53. Interacts with TTC5.,

## Research Area

## Image Data



Western blot analysis of lysates from COLO cells, using JMY Antibody. The lane on the right is blocked with the synthesized peptide.



Western Blot analysis of various cells using JMY Polyclonal Antibody

**Product Name: JMY Rabbit Polyclonal Antibody**  
**Catalog #: APRab12840**

---



**Note**

For research use only.