

Summary

Production Name	JMJD2B Rabbit Polyclonal Antibody
Description	Rabbit Polyclonal Antibody
Host	Rabbit
Application	IHC-P,IF-P,IF-F,ICC/IF,ELISA
Reactivity	Human,Rat,Mouse

Performance

Conjugation	Unconjugated
Modification	Unmodified
Isotype	IgG
Clonality	Polyclonal
Form	Liquid
Storage	Store at 4°C short term. Aliquot and store at -20°C long term. Avoid freeze/thaw cycles.
Buffer	Liquid in PBS containing 50% glycerol, 0.5% BSA and 0.02% New type preservative N.
Purification	Affinity purification

Immunogen

Gene Name	KDM4B
Alternative Names	KDM4B; JHDM3B; JMJD2B; KIAA0876; Lysine-specific demethylase 4B; JmjC domain-containing histone demethylation protein 3B; Jumonji domain-containing protein 2B
Gene ID	23030.0
SwissProt ID	O94953. The antiserum was produced against synthesized peptide derived from human KDM4B. AA range:351-400

Application

Dilution Ratio	IHC-P 1:100-1:300, ELISA 1:5000, IF-P/IF-F/ICC/IF 1:50-200
Molecular Weight	

Background

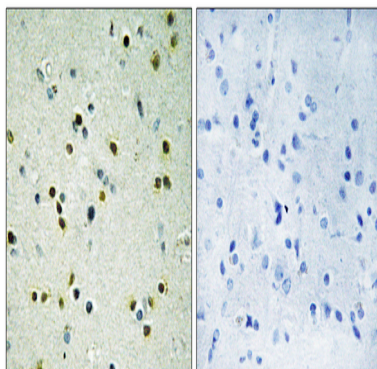
Product Name: JMJD2B Rabbit Polyclonal Antibody
Catalog #: APRab12839



cofactor: Binds 1 Fe(2+) ion per subunit., domain: The 2 Tudor domains recognize and bind methylated histones. Double Tudor domain has an interdigitated structure and the unusual fold is required for its ability to bind methylated histone tails., function: Histone demethylase that specifically demethylates 'Lys-9' of histone H3, thereby playing a role in histone code. Does not demethylate histone H3 'Lys-4', H3 'Lys-27', H3 'Lys-36' nor H4 'Lys-20'. Only able to demethylate trimethylated H3 'Lys-9', with a weaker activity than KDM4A, KDM4C and KDM4D. Demethylation of Lys residue generates formaldehyde and succinate., similarity: Belongs to the JHDM3 histone demethylase family., similarity: Contains 1 JmjC domain., similarity: Contains 1 JmjN domain., similarity: Contains 2 PHD-type zinc fingers., similarity: Contains 2 Tudor domains., cofactor: Binds 1 Fe(2+) ion per subunit., domain: The 2 Tudor domains recognize and bind methylated histones. Double Tudor domain has an interdigitated structure and the unusual fold is required for its ability to bind methylated histone tails., function: Histone demethylase that specifically demethylates 'Lys-9' of histone H3, thereby playing a role in histone code. Does not demethylate histone H3 'Lys-4', H3 'Lys-27', H3 'Lys-36' nor H4 'Lys-20'. Only able to demethylate trimethylated H3 'Lys-9', with a weaker activity than KDM4A, KDM4C and KDM4D. Demethylation of Lys residue generates formaldehyde and succinate., similarity: Belongs to the JHDM3 histone demethylase family., similarity: Contains 1 JmjC domain., similarity: Contains 1 JmjN domain., similarity: Contains 2 PHD-type zinc fingers., similarity: Contains 2 Tudor domains.,

Research Area

Image Data



Immunohistochemistry analysis of paraffin-embedded human brain, using JHD3B Antibody. The picture on the right is blocked with the synthesized peptide.

Note

For research use only.