

Summary

Production Name	INTS2 Rabbit Polyclonal Antibody
Description	Rabbit Polyclonal Antibody
Host	Rabbit
Application	WB,IHC-P
Reactivity	Human,Mouse,Rat

Performance

Conjugation	Unconjugated
Modification	Unmodified
Isotype	IgG
Clonality	Polyclonal
Form	Liquid
Storage	Store at 4°C short term. Aliquot and store at -20°C long term. Avoid freeze/thaw cycles.
Buffer	Liquid in PBS containing 50% glycerol, 0.5% BSA and 0.02% New type preservative N.
Purification	Affinity purification

Immunogen

Gene Name	INTS2
Alternative Names	INTS2; KIAA1287; Integrator complex subunit 2; Int2
Gene ID	57508.0
SwissProt ID	Q9H0H0. The antiserum was produced against synthesized peptide derived from human INTS2. AA range:201-250

Application

Dilution Ratio	WB 1:500-2000, IHC-P 1:50-300
Molecular Weight	140kDa

Background

INTS2 is a subunit of the Integrator complex, which associates with the C-terminal domain of RNA polymerase II large

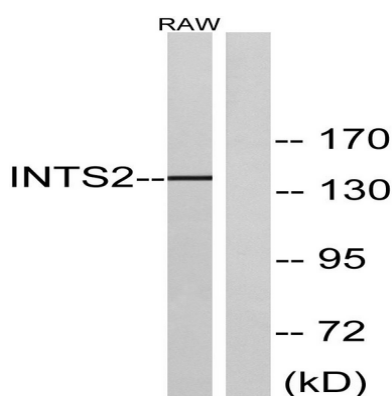
Product Name: INTS2 Rabbit Polyclonal Antibody
Catalog #: AP Rab12689



subunit (POLR2A; MIM 180660) and mediates 3-prime end processing of small nuclear RNAs U1 (RNU1; MIM 180680) and U2 (RNU2; MIM 180690) (Baillat et al., 2005 [PubMed 16239144]).[supplied by OMIM, Mar 2008],caution:It is uncertain whether Met-1 or Met-9 is the initiator. Orthologous sequences (mouse and chicken) have shorter N-terminus.,function:Component of the Integrator complex, a complex involved in the small nuclear RNAs (snRNA) U1 and U2 transcription and in their 3'-box-dependent processing. The Integrator complex is associated with the C-terminal domain (CTD) of RNA polymerase II largest subunit (POLR2A) and is recruited to the U1 and U2 snRNAs genes.,PTM:Phosphorylated upon DNA damage, probably by ATM or ATR.,similarity:Belongs to the Integrator subunit 2 family.,subunit:Belongs to the multiprotein complex Integrator, at least composed of INTS1, INTS2, INTS3, INTS4, INTS5, INTS6, INTS7, INTS8, INTS9/RC74, INTS10, CPSF3L/INTS11 and INTS12.,

Research Area

Image Data



Western blot analysis of lysates from RAW264.7 cells, using INTS2 Antibody. The lane on the right is blocked with the synthesized peptide.

Note

For research use only.