

Product Name: Integrin α X Rabbit Polyclonal Antibody
Catalog #: APRab12675



Summary

Production Name	Integrin α X Rabbit Polyclonal Antibody
Description	Rabbit Polyclonal Antibody
Host	Rabbit
Application	IHC-P,IF-P,IF-F,ICC/IF,ELISA
Reactivity	Human,Rat,Mouse

Performance

Conjugation	Unconjugated
Modification	Unmodified
Isotype	IgG
Clonality	Polyclonal
Form	Liquid
Storage	Store at 4°C short term. Aliquot and store at -20°C long term. Avoid freeze/thaw cycles.
Buffer	Liquid in PBS containing 50% glycerol, 0.5% BSA and 0.02% New type preservative N.
Purification	Affinity purification

Immunogen

Gene Name	ITGAX CD11C
Alternative Names	Integrin alpha-X (CD11 antigen-like family member C;Leu M5;Leukocyte adhesion glycoprotein p150,95 alpha chain;Leukocyte adhesion receptor p150,95;CD antigen CD11c)
Gene ID	3687.0
SwissProt ID	P20702.Synthetic peptide from human protein at AA range: 920-980

Application

Dilution Ratio	IHC-P 1:50-200, ELISA 1:10000-20000, IF-P/IF-F/ICC/IF 1:50-200
Molecular Weight	

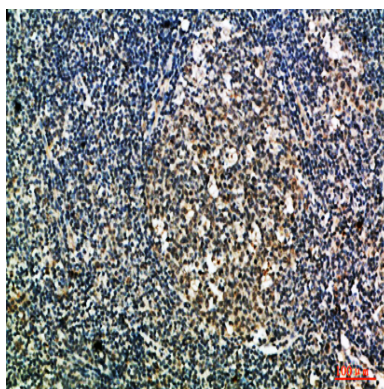
Background

integrin subunit alpha X(ITGAX) Homo sapiens This gene encodes the integrin alpha X chain protein. Integrins are heterodimeric integral membrane proteins composed of an alpha chain and a beta chain. This protein combines with the beta 2 chain (ITGB2) to form a leukocyte-specific integrin referred to as inactivated-C3b (iC3b) receptor 4 (CR4). The alpha X beta 2 complex seems to overlap the properties of the alpha M beta 2 integrin in the adherence of neutrophils and monocytes to stimulated endothelium cells, and in the phagocytosis of complement coated particles. Two transcript variants encoding different isoforms have been found for this gene. [provided by RefSeq, Nov 2013],domain:The integrin I-domain (insert) is a VWFA domain. Integrins with I-domains do not undergo protease cleavage.,function:Integrin alpha-X/beta-2 is a receptor for fibrinogen. It recognizes the sequence G-P-R in fibrinogen. It mediates cell-cell interaction during inflammatory responses. It is especially important in monocyte adhesion and chemotaxis.,similarity:Belongs to the integrin alpha chain family.,similarity:Contains 1 VWFA domain.,similarity:Contains 7 FG-GAP repeats.,subunit:Heterodimer of an alpha and a beta subunit. Alpha-X associates with beta-2.,tissue specificity:Predominantly expressed in monocytes and granulocytes.,

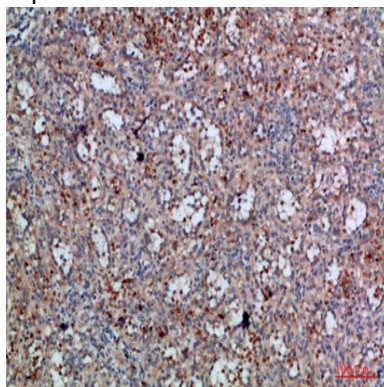
Research Area

Regulates Actin and Cytoskeleton;

Image Data



Immunohistochemical analysis of paraffin-embedded human-tonsil, antibody was diluted at 1:200



Product Name: Integrin α X Rabbit Polyclonal Antibody
Catalog #: APRab12675



Immunohistochemical analysis of paraffin-embedded human-spleen, antibody was diluted at 1:200

Note

For research use only.