

Product Name: Integrin α L Rabbit Polyclonal Antibody
Catalog #: APRab12673



Summary

Production Name	Integrin α L Rabbit Polyclonal Antibody
Description	Rabbit Polyclonal Antibody
Host	Rabbit
Application	WB,ELISA
Reactivity	Human,Rat,Mouse

Performance

Conjugation	Unconjugated
Modification	Unmodified
Isotype	IgG
Clonality	Polyclonal
Form	Liquid
Storage	Store at 4°C short term. Aliquot and store at -20°C long term. Avoid freeze/thaw cycles.
Buffer	Liquid in PBS containing 50% glycerol, 0.5% BSA and 0.02% New type preservative N.
Purification	Affinity purification

Immunogen

Gene Name	ITGAL ITGAL; CD11A; Integrin alpha-L; CD11 antigen-like family member A; Leukocyte
Alternative Names	adhesion glycoprotein LFA-1 alpha chain; LFA-1A; Leukocyte function-associated molecule 1 alpha chain; CD11a
Gene ID	3683.0
SwissProt ID	P20701. The antiserum was produced against synthesized peptide derived from the Internal region of human ITGAL. AA range:171-220

Application

Dilution Ratio	WB 1:500-1:2000, ELISA 1:10000.Not yet tested in other applications.
Molecular Weight	130kDa

Product Name: Integrin α L Rabbit Polyclonal Antibody
Catalog #: AP Rab12673



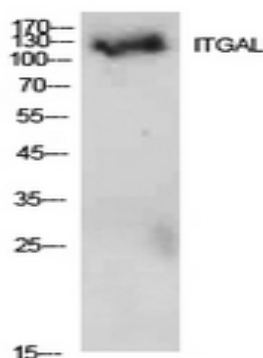
Background

integrin subunit alpha L (ITGAL) Homo sapiens ITGAL encodes the integrin alpha L chain. Integrins are heterodimeric integral membrane proteins composed of an alpha chain and a beta chain. This I-domain containing alpha integrin combines with the beta 2 chain (ITGB2) to form the integrin lymphocyte function-associated antigen-1 (LFA-1), which is expressed on all leukocytes. LFA-1 plays a central role in leukocyte intercellular adhesion through interactions with its ligands, ICAMs 1-3 (intercellular adhesion molecules 1 through 3), and also functions in lymphocyte costimulatory signaling. Two transcript variants encoding different isoforms have been found for this gene. [provided by RefSeq, Jul 2008], domain: The integrin I-domain (insert) is a VWFA domain. Integrins with I-domains do not undergo protease cleavage., function: Integrin alpha-L/beta-2 is a receptor for ICAM1, ICAM2, ICAM3 and ICAM4. It is involved in a variety of immune phenomena including leukocyte-endothelial cell interaction, cytotoxic T-cell mediated killing, and antibody dependent killing by granulocytes and monocytes., similarity: Belongs to the integrin alpha chain family., similarity: Contains 1 VWFA domain., similarity: Contains 7 FG-GAP repeats., subunit: Heterodimer of an alpha and a beta subunit. Alpha-L associates with beta-2., tissue specificity: Leukocytes.,

Research Area

Cell adhesion molecules (CAMs); Natural killer cell mediated cytotoxicity; Leukocyte transendothelial migration; Regulates Actin and Cytoskeleton; Viral myocarditis;

Image Data



Western Blot analysis of 293 cells using Integrin α L Polyclonal Antibody.. Secondary antibody was diluted at 1:20000

Note

For research use only.