

**Product Name: Integrin  $\alpha$ 1 Rabbit Polyclonal Antibody**  
**Catalog #: AP Rab12665**



## Summary

<b>Production Name</b>	Integrin $\alpha$ 1 Rabbit Polyclonal Antibody
<b>Description</b>	Rabbit Polyclonal Antibody
<b>Host</b>	Rabbit
<b>Application</b>	IHC-P,IF-P,IF-F,ICC/IF,ELISA
<b>Reactivity</b>	Human,Rat,Mouse

## Performance

<b>Conjugation</b>	Unconjugated
<b>Modification</b>	Unmodified
<b>Isotype</b>	IgG
<b>Clonality</b>	Polyclonal
<b>Form</b>	Liquid
<b>Storage</b>	Store at 4°C short term. Aliquot and store at -20°C long term. Avoid freeze/thaw cycles.
<b>Buffer</b>	Liquid in PBS containing 50% glycerol, 0.5% BSA and 0.02% New type preservative N.
<b>Purification</b>	Affinity purification

## Immunogen

<b>Gene Name</b>	ITGA1
<b>Alternative Names</b>	Integrin $\alpha$ -1 (CD49 antigen-like family member A;Laminin and collagen receptor;VLA-1;CD antigen CD49a)
<b>Gene ID</b>	3672.0
<b>SwissProt ID</b>	P56199.Synthetic peptide from human protein at AA range: 920-980

## Application

<b>Dilution Ratio</b>	IHC-P 1:50-200, ELISA 1:10000-20000, IF-P/IF-F/ICC/IF 1:50-200
<b>Molecular Weight</b>	

## Background

**Product Name: Integrin  $\alpha$ 1 Rabbit Polyclonal Antibody**  
**Catalog #: APRab12665**

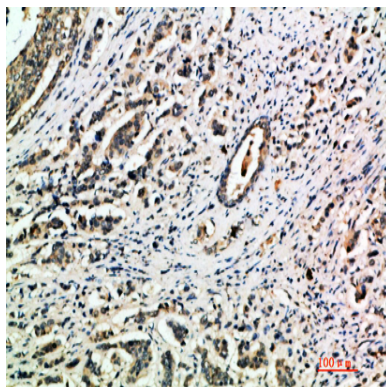


integrin subunit alpha 1 (ITGA1) Homo sapiens This gene encodes the alpha 1 subunit of integrin receptors. This protein heterodimerizes with the beta 1 subunit to form a cell-surface receptor for collagen and laminin. The heterodimeric receptor is involved in cell-cell adhesion and may play a role in inflammation and fibrosis. The alpha 1 subunit contains an inserted (I) von Willebrand factor type I domain which is thought to be involved in collagen binding. [provided by RefSeq, Jul 2008],domain:The integrin I-domain (insert) is a VWFA domain. Integrins with I-domains do not undergo protease cleavage.,function:Integrin alpha-1/beta-1 is a receptor for laminin and collagen. It recognizes the proline-hydroxylated sequence G-F-P-G-E-R in collagen.,similarity:Belongs to the integrin alpha chain family.,similarity:Contains 1 VWFA domain.,similarity:Contains 7 FG-GAP repeats.,subunit:Heterodimer of an alpha and a beta subunit. Alpha-1 associates with beta-1. Interacts with RAB21.,

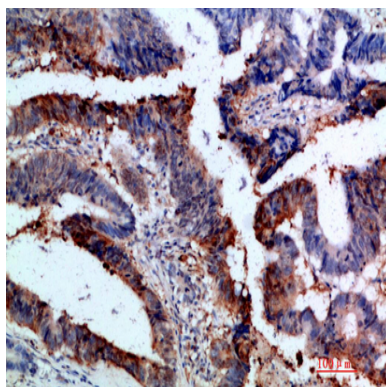
## Research Area

Focal adhesion;ECM-receptor interaction;Hematopoietic cell lineage;Regulates Actin and Cytoskeleton;Hypertrophic cardiomyopathy (HCM);Arrhythmogenic right ventricular cardiomyopathy (ARVC);Dilated cardiomyopathy;

## Image Data

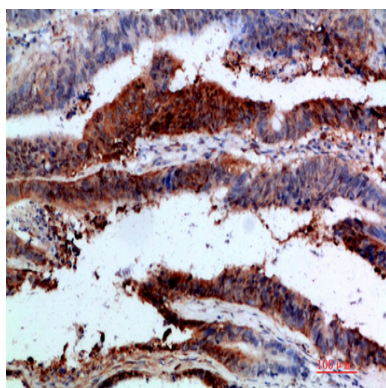


Immunohistochemical analysis of paraffin-embedded human-breast-cancer, antibody was diluted at 1:200

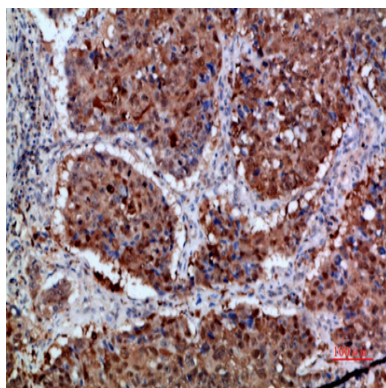


Immunohistochemical analysis of paraffin-embedded human-colon-cancer, antibody was diluted at 1:200

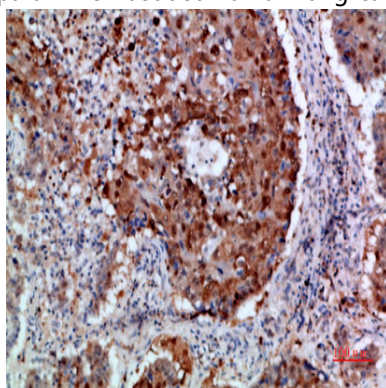
**Product Name: Integrin  $\alpha$ 1 Rabbit Polyclonal Antibody**  
**Catalog #: APRab12665**



Immunohistochemical analysis of paraffin-embedded human-colon-cancer, antibody was diluted at 1:200



Immunohistochemical analysis of paraffin-embedded human-lung-cancer, antibody was diluted at 1:200



Immunohistochemical analysis of paraffin-embedded human-lung-cancer, antibody was diluted at 1:200

## **Note**

For research use only.