

Product Name: InsP6 Kinase 3 Rabbit Polyclonal Antibody
Catalog #: APRab12632

Summary

Production Name	InsP6 Kinase 3 Rabbit Polyclonal Antibody
Description	Rabbit Polyclonal Antibody
Host	Rabbit
Application	WB,IHC-P,IF-P,IF-F,ICC/IF,ELISA
Reactivity	Human,Mouse

Performance

Conjugation	Unconjugated
Modification	Unmodified
Isotype	IgG
Clonality	Polyclonal
Form	Liquid
Storage	Store at 4°C short term. Aliquot and store at -20°C long term. Avoid freeze/thaw cycles.
Buffer	Liquid in PBS containing 50% glycerol, 0.5% BSA and 0.02% New type preservative N.
Purification	Affinity purification

Immunogen

Gene Name	IP6K3
Alternative Names	IP6K3; IHPK3; Inositol hexakisphosphate kinase 3; InsP6 kinase 3; Inositol hexaphosphate kinase 3
Gene ID	117283.0
SwissProt ID	Q96PC2.The antiserum was produced against synthesized peptide derived from human IP6K3. AA range:201-250

Application

Dilution Ratio	WB 1:500-1:2000, IHC-P 1:100-1:300, IF-P/IF-F/ICC/IF 1:200-1:1000, ELISA 1:20000.Not yet tested in other applications.
-----------------------	--

Product Name: InsP6 Kinase 3 Rabbit Polyclonal Antibody
Catalog #: AP Rab12632

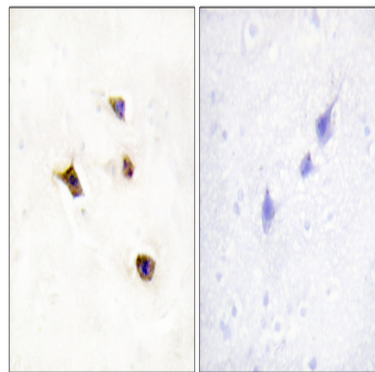
Molecular Weight 51kDa

Background

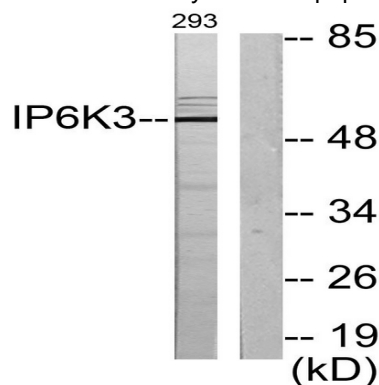
This gene encodes a protein that belongs to the inositol phosphokinase (IPK) family. This protein is likely responsible for the conversion of inositol hexakisphosphate (InsP6) to diphosphoinositol pentakisphosphate (InsP7/PP-InsP5). It may also convert 1,3,4,5,6-pentakisphosphate (InsP5) to PP-InsP4. Alternative splicing results in multiple transcript variants encoding the same protein.[provided by RefSeq, Dec 2008],catalytic activity:ATP + 1D-myo-inositol 1,3,4,5,6-pentakisphosphate = ADP + diphospho-1D-myo-inositol tetrakisphosphate (isomeric configuration unknown),catalytic activity:ATP + 1D-myo-inositol hexakisphosphate = ADP + 5-diphospho-1D-myo-inositol (1,2,3,4,6)pentakisphosphate.,function:Converts inositol hexakisphosphate (InsP6) to diphosphoinositol pentakisphosphate (InsP7/PP-InsP5). Converts 1,3,4,5,6-pentakisphosphate (InsP5) to PP-InsP4.,similarity:Belongs to the inositol phosphokinase (IPK) family.,tissue specificity:Detected in brain.,

Research Area

Image Data



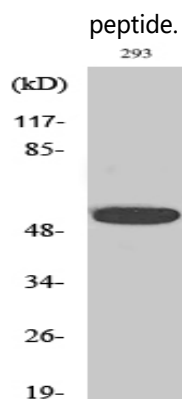
Immunohistochemistry analysis of paraffin-embedded human brain tissue, using IP6K3 Antibody. The picture on the right is blocked with the synthesized peptide.



Product Name: InsP6 Kinase 3 Rabbit Polyclonal Antibody
Catalog #: APRab12632



Western blot analysis of lysates from 293 cells, using IP6K3 Antibody. The lane on the right is blocked with the synthesized



Western Blot analysis of various cells using InsP6 Kinase 3 Polyclonal Antibody

Note

For research use only.