

Product Name: InsP5 2-kinase Rabbit Polyclonal Antibody
Catalog #: APRab12631

Summary

Production Name	InsP5 2-kinase Rabbit Polyclonal Antibody
Description	Rabbit Polyclonal Antibody
Host	Rabbit
Application	WB,IHC-P,IF-P,IF-F,ICC/IF,ELISA
Reactivity	Human,Mouse,Rat

Performance

Conjugation	Unconjugated
Modification	Unmodified
Isotype	IgG
Clonality	Polyclonal
Form	Liquid
Storage	Store at 4°C short term. Aliquot and store at -20°C long term. Avoid freeze/thaw cycles.
Buffer	Liquid in PBS containing 50% glycerol, 0.5% BSA and 0.02% New type preservative N.
Purification	Affinity purification

Immunogen

Gene Name	IPPK
Alternative Names	IPPK; C9orf12; Inositol-pentakisphosphate 2-kinase; IPK1 homolog; Inositol-1; 3,4,5,6-pentakisphosphate 2-kinase; Ins(1,3,4,5,6)P5 2-kinase; InsP5 2-kinase
Gene ID	64768.0
SwissProt ID	Q9H8X2. The antiserum was produced against synthesized peptide derived from human IPPK. AA range:11-60

Application

Dilution Ratio	WB 1:500-1:2000, IHC-P 1:100-1:300, IF-P/IF-F/ICC/IF 1:200-1:1000, ELISA 1:10000. Not yet tested in other applications.
Molecular Weight	56kDa

Product Name: InsP5 2-kinase Rabbit Polyclonal Antibody
Catalog #: APRab12631

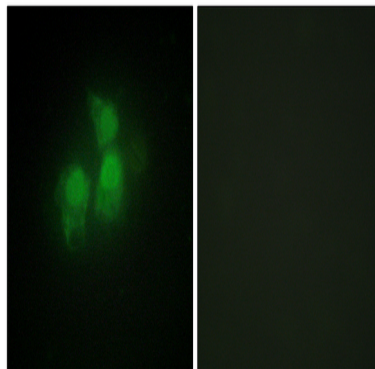
Background

The protein encoded by this gene is a kinase that phosphorylates position 2 of inositol-1,3,4,5,6-pentakisphosphate to form inositol-1,2,3,4,5,6-hexakisphosphate (InsP6). InsP6 has a variety of functions, including stimulation of DNA repair, endocytosis, and mRNA export. [provided by RefSeq, Nov 2010],catalytic activity:ATP + 1D-myo-inositol 1,3,4,5,6-pentakisphosphate = ADP + 1D-myo-inositol hexakisphosphate.,domain:The EXKPK motif is conserved in inositol-pentakisphosphate 2-kinases of both family 1 and 2.,function:Phosphorylates Ins(1,3,4,5,6)P5 at position 2 to form Ins(1,2,3,4,5,6)P6 (InsP6 or phytate). InsP6 is involved in many processes such as mRNA export, non-homologous end-joining, endocytosis, ion channel regulation. It also protects cells from TNF-alpha-induced apoptosis.,similarity:Belongs to the IPK1 type 2 family.,tissue specificity:Ubiquitously expressed, with high expression in heart, brain, testis and placenta.,

Research Area

Inositol phosphate metabolism;Phosphatidylinositol signaling system;

Image Data



Immunofluorescence analysis of HepG2 cells, using IPPK Antibody. The picture on the right is blocked with the synthesized peptide.

Note

For research use only.