

## Summary

<b>Production Name</b>	IL-5R $\alpha$ Rabbit Polyclonal Antibody
<b>Description</b>	Rabbit Polyclonal Antibody
<b>Host</b>	Rabbit
<b>Application</b>	WB,IHC-P,IF-P,IF-F,ICC/IF,ELISA
<b>Reactivity</b>	Human,Rat,Mouse

## Performance

<b>Conjugation</b>	Unconjugated
<b>Modification</b>	Unmodified
<b>Isotype</b>	IgG
<b>Clonality</b>	Polyclonal
<b>Form</b>	Liquid
<b>Storage</b>	Store at 4°C short term. Aliquot and store at -20°C long term. Avoid freeze/thaw cycles.
<b>Buffer</b>	Liquid in PBS containing 50% glycerol, 0.5% BSA and 0.02% New type preservative N.
<b>Purification</b>	Affinity purification

## Immunogen

<b>Gene Name</b>	IL5RA
<b>Alternative Names</b>	IL5RA; IL5R; Interleukin-5 receptor subunit alpha; IL-5 receptor subunit alpha; IL-5R subunit alpha; IL-5R-alpha; IL-5RA; CDw125; CD125
<b>Gene ID</b>	3568.0
<b>SwissProt ID</b>	Q01344.The antiserum was produced against synthesized peptide derived from the N-terminal region of human IL5RA. AA range:41-90

## Application

<b>Dilution Ratio</b>	WB 1:500-1:2000, IHC-P 1:100-300, ELISA 1:20000, IF-P/IF-F/ICC/IF 1:50-200
<b>Molecular Weight</b>	47kDa

**Product Name: IL-5R $\alpha$  Rabbit Polyclonal Antibody**  
**Catalog #: APRab12563**



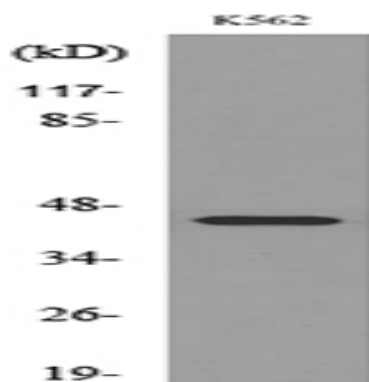
## Background

The protein encoded by this gene is an interleukin 5 specific subunit of a heterodimeric cytokine receptor. The receptor is comprised of a ligand specific alpha subunit and a signal transducing beta subunit shared by the receptors for interleukin 3 (IL3), colony stimulating factor 2 (CSF2/GM-CSF), and interleukin 5 (IL5). The binding of this protein to IL5 depends on the beta subunit. The beta subunit is activated by the ligand binding, and is required for the biological activities of IL5. This protein has been found to interact with syndecan binding protein (syntenin), which is required for IL5 mediated activation of the transcription factor SOX4. Several alternatively spliced transcript variants encoding four distinct isoforms have been reported. [provided by RefSeq, Jul 2011],domain:The box 1 motif is required for JAK interaction and/or activation.,domain:The WSXWS motif appears to be necessary for proper protein folding and thereby efficient intracellular transport and cell-surface receptor binding.,function:This is the receptor for interleukin-5. The alpha chain binds to IL5.,similarity:Belongs to the type I cytokine receptor family. Type 5 subfamily.,subunit:Heterodimer of an alpha and a beta subunit. The beta subunit is common to the IL3, IL5 and GM-CSF receptors. Interacts with SDCBP.,tissue specificity:Expressed on eosinophils and basophils.,

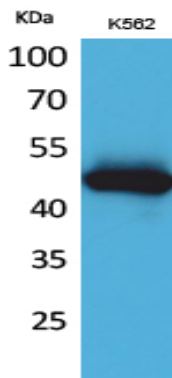
## Research Area

Cytokine-cytokine receptor interaction;Jak\_STAT;Hematopoietic cell lineage;

## Image Data



Western blot analysis of lysate from K562 cells, using IL5RA Antibody.



**Product Name: IL-5R $\alpha$  Rabbit Polyclonal Antibody**  
**Catalog #: APRab12563**

---



Western Blot analysis of K562 cells using IL-5R $\alpha$  Polyclonal Antibody.. Secondary antibody was diluted at 1:20000

**Note**

For research use only.