

Product Name: IL-2R β Rabbit Polyclonal Antibody
Catalog #: APRab12548



Summary

Production Name	IL-2R β Rabbit Polyclonal Antibody
Description	Rabbit Polyclonal Antibody
Host	Rabbit
Application	WB,IF-P,IF-F,ICC/IF,ELISA
Reactivity	Human,Mouse,Rat

Performance

Conjugation	Unconjugated
Modification	Unmodified
Isotype	IgG
Clonality	Polyclonal
Form	Liquid
Storage	Store at 4°C short term. Aliquot and store at -20°C long term. Avoid freeze/thaw cycles.
Buffer	Liquid in PBS containing 50% glycerol, 0.5% BSA and 0.02% New type preservative N.
Purification	Affinity purification

Immunogen

Gene Name	IL2RB
Alternative Names	IL2RB; Interleukin-2 receptor subunit beta; IL-2 receptor subunit beta; IL-2R subunit beta; IL-2RB; High affinity IL-2 receptor subunit beta; p70-75; p75; CD antigen CD122
Gene ID	3560.0
SwissProt ID	P14784.The antiserum was produced against synthesized peptide derived from human IL-2R beta. AA range:331-380

Application

Dilution Ratio	WB 1:500-1:2000, IF-P/IF-F/ICC/IF 1:200-1:1000, ELISA 1:10000.Not yet tested in other applications.
Molecular Weight	61kDa

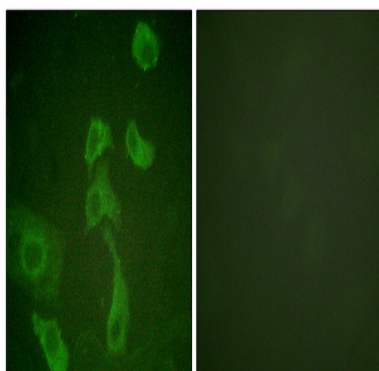
Background

The interleukin 2 receptor, which is involved in T cell-mediated immune responses, is present in 3 forms with respect to ability to bind interleukin 2. The low affinity form is a monomer of the alpha subunit and is not involved in signal transduction. The intermediate affinity form consists of an alpha/beta subunit heterodimer, while the high affinity form consists of an alpha/beta/gamma subunit heterotrimer. Both the intermediate and high affinity forms of the receptor are involved in receptor-mediated endocytosis and transduction of mitogenic signals from interleukin 2. The protein encoded by this gene represents the beta subunit and is a type I membrane protein. The use of alternative promoters results in multiple transcript variants encoding the same protein. The protein is primarily expressed in the hematopoietic system. The use by some variants of an alternate promoter in an updomain: The box 1 motif is required for JAK interaction and/or activation., domain: The WSXWS motif appears to be necessary for proper protein folding and thereby efficient intracellular transport and cell-surface receptor binding., function: Receptor for interleukin-2. This beta subunit is involved in receptor mediated endocytosis and transduces the mitogenic signals of IL2., similarity: Belongs to the type I cytokine receptor family. Type 4 subfamily., similarity: Contains 1 fibronectin type-III domain., subunit: Non-covalent dimer of an alpha and a beta chains. IL2R exists in 3 different forms: a high affinity dimer, an intermediate affinity monomer (beta chain), and a low affinity monomer (alpha chain). The high and intermediate affinity forms also associate with a gamma chain. Interacts with SHB upon interleukin stimulation. Interacts with HTLV-1 accessory protein p12I.,

Research Area

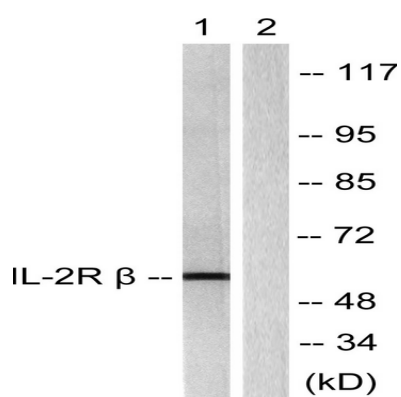
Cytokine-cytokine receptor interaction; Endocytosis; Jak_STAT;

Image Data



Immunofluorescence analysis of HeLa cells, using IL-2R beta Antibody. The picture on the right is blocked with the synthesized peptide.

Product Name: IL-2R β Rabbit Polyclonal Antibody
Catalog #: APRab12548



Western blot analysis of lysates from HepG2 cells, using IL-2R beta Antibody. The lane on the right is blocked with the synthesized peptide.

Note

For research use only.