

Product Name: IL-29 Rabbit Polyclonal Antibody
Catalog #: APRab12546



Summary

Production Name	IL-29 Rabbit Polyclonal Antibody
Description	Rabbit Polyclonal Antibody
Host	Rabbit
Application	WB,ELISA
Reactivity	Human,Rat,Mouse

Performance

Conjugation	Unconjugated
Modification	Unmodified
Isotype	IgG
Clonality	Polyclonal
Form	Liquid
Storage	Store at 4°C short term. Aliquot and store at -20°C long term. Avoid freeze/thaw cycles.
Buffer	Liquid in PBS containing 50% glycerol, 0.5% BSA and 0.02% New type preservative N.
Purification	Affinity purification

Immunogen

Gene Name	IL29
Alternative Names	IL29; IFNL1; ZCYTO21; Interleukin-29; IL-29; Cytokine Zcyto21; Interferon lambda-1; IFN-lambda-1
Gene ID	282618.0
SwissProt ID	Q8IU54.The antiserum was produced against synthesized peptide derived from the Internal region of human IL29. AA range:121-170

Application

Dilution Ratio	WB 1:500-1:2000, ELISA 1:20000.Not yet tested in other applications.
Molecular Weight	21kDa

Product Name: IL-29 Rabbit Polyclonal Antibody
Catalog #: APRab12546



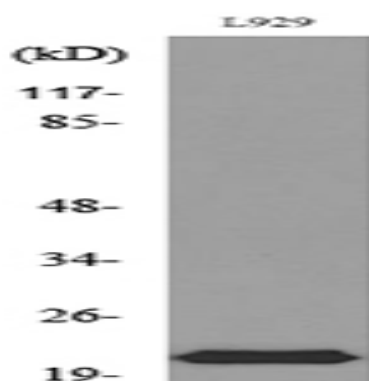
Background

This gene encodes a cytokine distantly related to type I interferons and the IL-10 family. This gene, interleukin 28A (IL28A), and interleukin 28B (IL28B) are three closely related cytokine genes that form a cytokine gene cluster on a chromosomal region mapped to 19q13. Expression of the cytokines encoded by the three genes can be induced by viral infection. All three cytokines have been shown to interact with a heterodimeric class II cytokine receptor that consists of interleukin 10 receptor, beta (IL10RB) and interleukin 28 receptor, alpha (IL28RA). [provided by RefSeq, Jul 2008],function:Cytokine with immunomodulatory activity. May play a role in antiviral immunity. Up-regulates MHC class I antigen expression. Ligand for the heterodimeric class II cytokine receptor composed of IL10RB and IL28RA. The ligand/receptor complex seems to signal through the Jak-STAT pathway.,induction:By viral infections or double stranded RNA.,online information:Interleukin-29 entry,similarity:Belongs to the IL-28/IL-29 family.,

Research Area

Cytokine-cytokine receptor interaction;Jak_STAT;

Image Data



Western blot analysis of lysate from L929 cells, using IL29 Antibody.



Western Blot analysis of L929 cells using IL-29 Polyclonal Antibody.. Secondary antibody was diluted at 1:20000

Product Name: IL-29 Rabbit Polyclonal Antibody
Catalog #: APRab12546



Note

For research use only.