

Product Name: IL-26 Rabbit Polyclonal Antibody
Catalog #: APRab12541



Summary

Production Name	IL-26 Rabbit Polyclonal Antibody
Description	Rabbit Polyclonal Antibody
Host	Rabbit
Application	WB,ELISA
Reactivity	Human,Rat,Mouse

Performance

Conjugation	Unconjugated
Modification	Unmodified
Isotype	IgG
Clonality	Polyclonal
Form	Liquid
Storage	Store at 4°C short term. Aliquot and store at -20°C long term. Avoid freeze/thaw cycles.
Buffer	Liquid in PBS containing 50% glycerol, 0.5% BSA and 0.02% New type preservative N.
Purification	Affinity purification

Immunogen

Gene Name	IL26
Alternative Names	IL26; AK155; Interleukin-26; IL-26; Protein AK155
Gene ID	55801.0
SwissProt ID	Q9NPH9. Synthesized peptide derived from Interleukin-26 at AA range: 21-70

Application

Dilution Ratio	WB 1:500-1:2000, ELISA 1:10000. Not yet tested in other applications.
Molecular Weight	25kDa

Background

This gene was identified by its overexpression specifically in herpesvirus saimiri-transformed T cells. The encoded protein is a member of the IL10 family of cytokines. It is a secreted protein and may function as a homodimer. This protein is

Product Name: IL-26 Rabbit Polyclonal Antibody
Catalog #: APRab12541

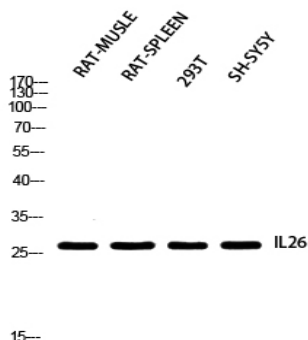


thought to contribute to the transformed phenotype of T cells after infection by herpesvirus saimiri. [provided by RefSeq, Jul 2008],induction:By Herpesvirus saimiri infection.,online information:Interleukin-26 entry,similarity:Belongs to the IL-10 family.,subunit:Homodimer.,tissue specificity:Expressed in HVS transformed T-cells but not other T-cell lines or primary stimulated T-cells.,

Research Area

Cytokine-cytokine receptor interaction;Jak_STAT;

Image Data



Western blot analysis of RAT-MUSCLE RAT-SPLEEN 293T SH-SY5Y using IL26 antibody. Antibody was diluted at 1:2000.
Secondary antibody was diluted at 1:20000

Note

For research use only.