

## Summary

<b>Production Name</b>	IL-1F7 Rabbit Polyclonal Antibody
<b>Description</b>	Rabbit Polyclonal Antibody
<b>Host</b>	Rabbit
<b>Application</b>	IHC-P,IF-P,IF-F,ICC/IF,ELISA
<b>Reactivity</b>	Human,Rat,Mouse

## Performance

<b>Conjugation</b>	Unconjugated
<b>Modification</b>	Unmodified
<b>Isotype</b>	IgG
<b>Clonality</b>	Polyclonal
<b>Form</b>	Liquid
<b>Storage</b>	Store at 4°C short term. Aliquot and store at -20°C long term. Avoid freeze/thaw cycles.
<b>Buffer</b>	Liquid in PBS containing 50% glycerol, 0.5% BSA and 0.02% New type preservative N.
<b>Purification</b>	Affinity purification

## Immunogen

<b>Gene Name</b>	IL37 Interleukin-37 (FIL1 zeta;IL-1X;Interleukin-1 family member 7;IL-1F7;Interleukin-1
<b>Alternative Names</b>	homolog 4;IL-1H;IL-1H4;Interleukin-1 zeta;IL-1 zeta;Interleukin-1-related protein;IL-1RP1;Interleukin-23;IL-37)
<b>Gene ID</b>	27178.0
<b>SwissProt ID</b>	Q9NZH6.Synthetic peptide from human protein at AA range: 101-150

## Application

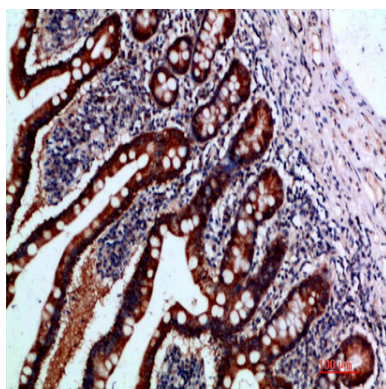
<b>Dilution Ratio</b>	IHC-P 1:50-200, ELISA 1:10000-20000, IF-P/IF-F/ICC/IF 1:50-200
<b>Molecular Weight</b>	

## Background

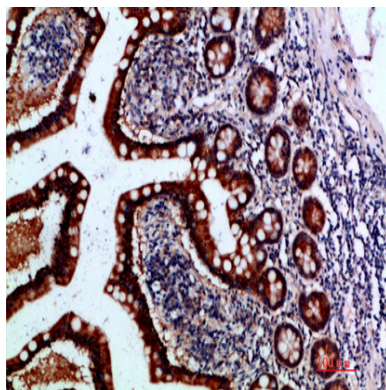
The protein encoded by this gene is a member of the interleukin 1 cytokine family. This cytokine can bind to, and may be a ligand for interleukin 18 receptor (IL18R1/IL-1Rrp). This cytokine also binds to interleukin 18 binding protein (IL18BP), an inhibitory binding protein of interleukin 18 (IL18), and subsequently forms a complex with IL18 receptor beta subunit, and through which it inhibits the activity of IL18. This gene along with eight other interleukin 1 family genes form a cytokine gene cluster on chromosome 2. Five alternatively spliced transcript variants encoding distinct isoforms have been reported. [provided by RefSeq, Jul 2008],function: Binds to interleukin-18 receptor (IL-18R) receptor but not to IL-1 receptor. Could be a new player in the inflammatory and immune responses mediated by the IL-18/IL-18R axis.,induction: By phorbol ester (PMA) in different cell lines.,miscellaneous: The sequence shown here is derived from an EMBL/GenBank/DBJ third party annotation (TPA) entry.,online information: Interleukin-1 entry,similarity: Belongs to the IL-1 family.,tissue specificity: Isoform A, isoform B and isoform C are expressed in testis, colon, placenta, lung and lymph node. Isoform D and isoform E were found only in testis and bone marrow. Whereas only isoform A is found in brain, only isoform B in kidney and only isoform C in heart.,

## Research Area

## Image Data



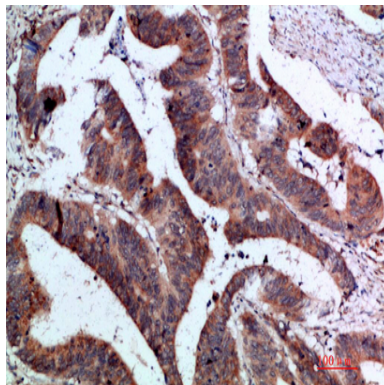
Immunohistochemical analysis of paraffin-embedded human-small intestine, antibody was diluted at 1:200



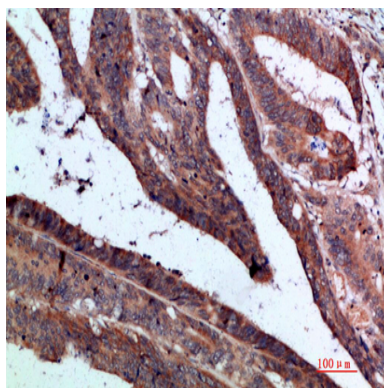
**Product Name: IL-1F7 Rabbit Polyclonal Antibody**  
**Catalog #: APRab12521**



Immunohistochemical analysis of paraffin-embedded human-small-intestine, antibody was diluted at 1:200



Immunohistochemical analysis of paraffin-embedded human-colon-cancer, antibody was diluted at 1:200



Immunohistochemical analysis of paraffin-embedded human-colon-cancer, antibody was diluted at 1:200

## **Note**

For research use only.