

**Product Name: IL-1F6 Rabbit Polyclonal Antibody**  
**Catalog #: APRab12520**

---



## Summary

<b>Production Name</b>	IL-1F6 Rabbit Polyclonal Antibody
<b>Description</b>	Rabbit Polyclonal Antibody
<b>Host</b>	Rabbit
<b>Application</b>	IHC-P,IF-P,IF-F,ICC/IF,ELISA
<b>Reactivity</b>	Human,Rat,Mouse

## Performance

<b>Conjugation</b>	Unconjugated
<b>Modification</b>	Unmodified
<b>Isotype</b>	IgG
<b>Clonality</b>	Polyclonal
<b>Form</b>	Liquid
<b>Storage</b>	Store at 4°C short term. Aliquot and store at -20°C long term. Avoid freeze/thaw cycles.
<b>Buffer</b>	Liquid in PBS containing 50% glycerol, 0.5% BSA and 0.02% New type preservative N.
<b>Purification</b>	Affinity purification

## Immunogen

<b>Gene Name</b>	IL36A FIL1E IL1E IL1F6
<b>Alternative Names</b>	Interleukin-36 alpha (FIL1 epsilon;Interleukin-1 epsilon;IL-1 epsilon;Interleukin-1 family member 6;IL-1F6)
<b>Gene ID</b>	27179.0
<b>SwissProt ID</b>	Q9UHA7.The antiserum was produced against synthesized peptide derived from the Internal region of human IL36A. AA range:21-70

## Application

<b>Dilution Ratio</b>	IHC-P 1:50-200, ELISA 1:10000-20000, IF-P/IF-F/ICC/IF 1:50-200
<b>Molecular Weight</b>	

**Product Name: IL-1F6 Rabbit Polyclonal Antibody**  
**Catalog #: AP Rab12520**

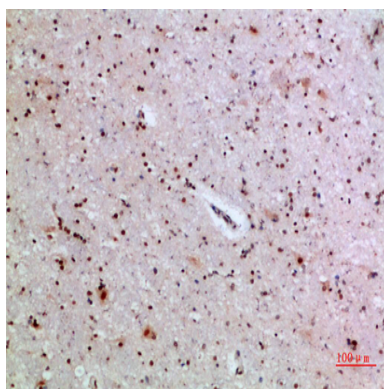


## Background

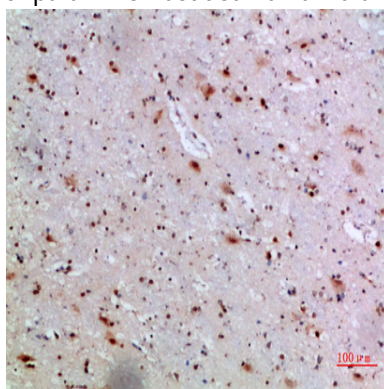
The protein encoded by this gene is a cytokine that can activate NF-kappa-B and MAPK signaling pathways to generate an inflammatory response. The encoded protein functions primarily in skin and demonstrates increased expression in psoriasis. In addition, decreased expression of this gene has been linked to a poor prognosis in both hepatocellular carcinoma and colorectal cancer patients. [provided by RefSeq, Nov 2015],miscellaneous:Binding analysis failed to detect interaction with multiple IL1R family members.,online information:Interleukin-1 entry,similarity:Belongs to the IL-1 family.,tissue specificity:Expressed in immune system and fetal brain, but not in other tissues tested or in multiple hematopoietic cell lines.,

## Research Area

## Image Data



Immunohistochemical analysis of paraffin-embedded human-brain, antibody was diluted at 1:200



Immunohistochemical analysis of paraffin-embedded human-brain, antibody was diluted at 1:200

## Note

For research use only.