

Summary

Production Name	IL-17F Rabbit Polyclonal Antibody
Description	Rabbit Polyclonal Antibody
Host	Rabbit
Application	IHC-P,IF-P,IF-F,ICC/IF,ELISA
Reactivity	Human,Rat,Mouse

Performance

Conjugation	Unconjugated
Modification	Unmodified
Isotype	IgG
Clonality	Polyclonal
Form	Liquid
Storage	Store at 4°C short term. Aliquot and store at -20°C long term. Avoid freeze/thaw cycles.
Buffer	Liquid in PBS containing 50% glycerol, 0.5% BSA and 0.02% New type preservative N.
Purification	Affinity purification

Immunogen

Gene Name	IL17F IL24
Alternative Names	Interleukin-17F (IL-17F;Cytokine ML-1;Interleukin-24;IL-24)
Gene ID	112744.0
SwissProt ID	Q96PD4.Synthetic peptide from human protein at AA range: 81-130

Application

Dilution Ratio	IHC-P 1:50-200, ELISA 1:10000-20000, IF-P/IF-F/ICC/IF 1:50-200
Molecular Weight	

Background

The protein encoded by this gene is a cytokine that shares sequence similarity with IL17. This cytokine is expressed by

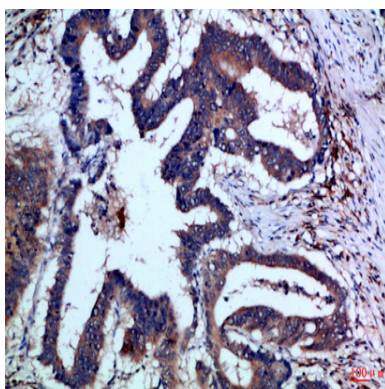
Product Name: IL-17F Rabbit Polyclonal Antibody
Catalog #: APRab12508



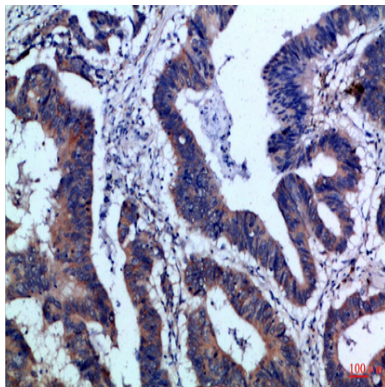
activated T cells, and has been shown to stimulate the production of several other cytokines, including IL6, IL8, and CSF2/GM-CSF. This cytokine is also found to inhibit the angiogenesis of endothelial cells and induce endothelial cells to produce IL2, TGFB1/TGFB, and monocyte chemoattractant protein-1. [provided by RefSeq, Jul 2008],function:Stimulates the production of other cytokines such as IL-6, IL-8 and granulocyte colony-stimulating factor, and can regulate cartilage matrix turnover. Stimulates PBMC and T-cell proliferation. Inhibits angiogenesis.,online information:Interleukin-17 entry,similarity:Belongs to the IL-17 family.,subunit:Homodimer; disulfide-linked.,tissue specificity:Expressed in activated, but not resting, CD4+ T-cells and activated monocytes.,

Research Area

Image Data



Immunohistochemical analysis of paraffin-embedded Human-colon-cancer, antibody was diluted at 1:100



Immunohistochemical analysis of paraffin-embedded Human-colon-cancer, antibody was diluted at 1:100

Note

For research use only.