

## Summary

<b>Production Name</b>	IGF-I Rabbit Polyclonal Antibody
<b>Description</b>	Rabbit Polyclonal Antibody
<b>Host</b>	Rabbit
<b>Application</b>	IHC-P,IF-P,IF-F,ICC/IF,ELISA
<b>Reactivity</b>	Human,Mouse,Rat

## Performance

<b>Conjugation</b>	Unconjugated
<b>Modification</b>	Unmodified
<b>Isotype</b>	IgG
<b>Clonality</b>	Polyclonal
<b>Form</b>	Liquid
<b>Storage</b>	Store at 4°C short term. Aliquot and store at -20°C long term. Avoid freeze/thaw cycles.
<b>Buffer</b>	Liquid in PBS containing 50% glycerol, 0.5% BSA and 0.02% New type preservative N.
<b>Purification</b>	Affinity purification

## Immunogen

<b>Gene Name</b>	IGF1
<b>Alternative Names</b>	IBP1; IGF-IA; IGF1A; IGF1; insulin-like growth factor 1; insulin-like growth factor IA; mechano growth factor; MGF; somatomedin C
<b>Gene ID</b>	3479.0
<b>SwissProt ID</b>	P05019.The antiserum was produced against synthesized peptide derived from human IGF-I. AA range:100-149

## Application

<b>Dilution Ratio</b>	IHC-P 1:100-1:300, ELISA 1:10000, IF-P/IF-F/ICC/IF 1:50-200
<b>Molecular Weight</b>	

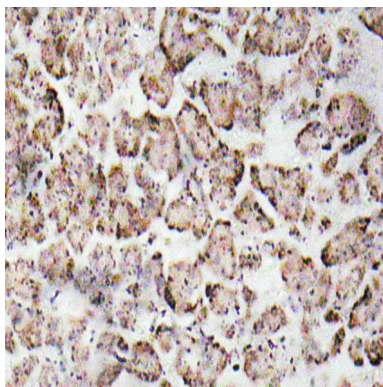
## Background

The protein encoded by this gene is similar to insulin in function and structure and is a member of a family of proteins involved in mediating growth and development. The encoded protein is processed from a precursor, bound by a specific receptor, and secreted. Defects in this gene are a cause of insulin-like growth factor I deficiency. Alternative splicing results in multiple transcript variants encoding different isoforms that may undergo similar processing to generate mature protein. [provided by RefSeq, Sep 2015],disease:Defects in IGF1 are the cause of insulin-like growth factor I deficiency (IGF1 deficiency) [MIM:608747]. IGF1 deficiency is an autosomal recessive disorder characterized by growth retardation, sensorineural deafness and mental retardation.,function:The insulin-like growth factors, isolated from plasma, are structurally and functionally related to insulin but have a much higher growth-promoting activity.,online information:Insulin-like growth factor 1 entry,online information:The Singapore human mutation and polymorphism database,similarity:Belongs to the insulin family.,

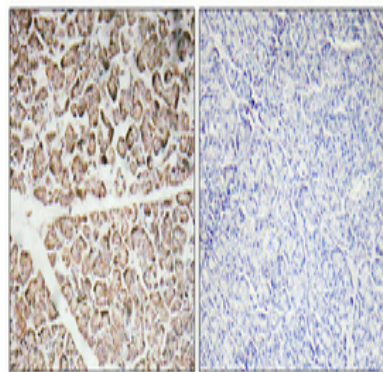
## Research Area

Oocyte meiosis;p53;mTOR;Focal adhesion;Long-term depression;Progesterone-mediated oocyte maturation;Aldosterone-regulated sodium reabsorption;Pathways in cancer;Glioma;Prostate cancer;Melanoma;Hypertrophic cardiomyopathy (HCM);Dilated cardiomyopathy;

## Image Data



Immunohistochemistry analysis of IGF-I antibody in paraffin-embedded human pancreas tissue.



**Product Name: IGF-I Rabbit Polyclonal Antibody**  
**Catalog #: APRab12434**

---

Immunohistochemical analysis of paraffin-embedded Human pancreas. Antibody was diluted at 1:100 (4°,overnight) . High-pressure and temperature Tris-EDTA,pH8.0 was used for antigen retrieval. Negative contrl (right) obtaned from antibody was pre-absorbed by immunogen peptide.

### **Note**

For research use only.