

Summary

Production Name	IFN- β Rabbit Polyclonal Antibody
Description	Rabbit Polyclonal Antibody
Host	Rabbit
Application	IHC-P,IF-P,IF-F,ICC/IF,ELISA
Reactivity	Human,Rat,Mouse

Performance

Conjugation	Unconjugated
Modification	Unmodified
Isotype	IgG
Clonality	Polyclonal
Form	Liquid
Storage	Store at 4°C short term. Aliquot and store at -20°C long term. Avoid freeze/thaw cycles.
Buffer	Liquid in PBS containing 50% glycerol, 0.5% BSA and 0.02% New type preservative N.
Purification	Affinity purification

Immunogen

Gene Name	IFNB1 IFB IFNB
Alternative Names	Interferon beta (IFN-beta;Fibroblast interferon)
Gene ID	3456.0
SwissProt ID	P01574.Synthetic peptide from human protein at AA range: 91-140

Application

Dilution Ratio	IHC-P 1:50-200, ELISA 1:10000-20000, IF-P/IF-F/ICC/IF 1:50-200
Molecular Weight	

Background

This gene encodes a cytokine that belongs to the interferon family of signaling proteins, which are released as part of the

Product Name: IFN- β Rabbit Polyclonal Antibody
Catalog #: APRab12402

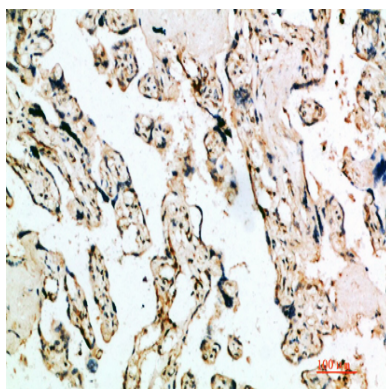


innate immune response to pathogens. The protein encoded by this gene belongs to the type I class of interferons, which are important for defense against viral infections. In addition, type I interferons are involved in cell differentiation and anti-tumor defenses. Following secretion in response to a pathogen, type I interferons bind a homologous receptor complex and induce transcription of genes such as those encoding inflammatory cytokines and chemokines. Overactivation of type I interferon secretion is linked to autoimmune diseases. Mice deficient for this gene display several phenotypes including defects in B cell maturation and increased susceptibility to viral infection. [provided by RefSeq, Sep 2015],function:Has antiviral, antibacterial and anticancer activities.,online information:Clinical information on Avonex,online information:Clinical information on Betaseron,pharmaceutical:Available under the names Avonex (Biogen), Betaseron (Berlex) and Rebif (Serono). Used in the treatment of multiple sclerosis (MS). Betaseron is a slightly modified form of IFNB1 with two residue substitutions.,similarity:Belongs to the alpha/beta interferon family.,subunit:Monomer.,

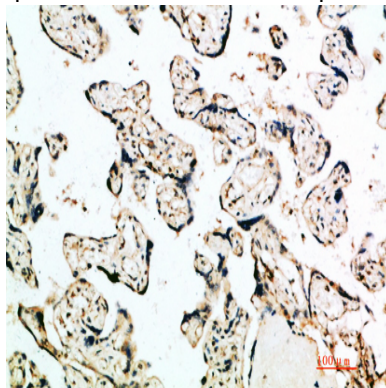
Research Area

Cytokine-cytokine receptor interaction;Toll_Like;RIG-I-like receptor;Cytosolic DNA-sensing pathway;Jak_STAT;Natural killer cell mediated cytotoxicity;

Image Data

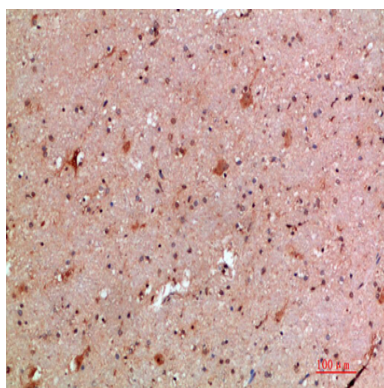


Immunohistochemical analysis of paraffin-embedded human-placenta, antibody was diluted at 1:200

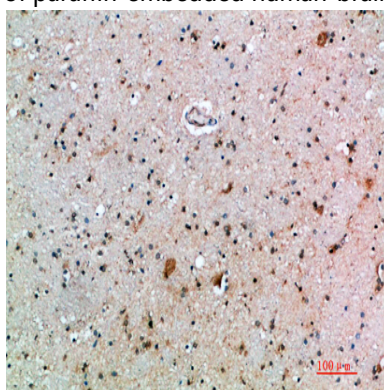


Immunohistochemical analysis of paraffin-embedded human-placenta, antibody was diluted at 1:200

Product Name: IFN- β Rabbit Polyclonal Antibody
Catalog #: APRab12402



Immunohistochemical analysis of paraffin-embedded human-brain, antibody was diluted at 1:200



Immunohistochemical analysis of paraffin-embedded human-brain, antibody was diluted at 1:200

Note

For research use only.