

**Product Name: IFI-56K Rabbit Polyclonal Antibody**  
**Catalog #: APRab12376**



## Summary

<b>Production Name</b>	IFI-56K Rabbit Polyclonal Antibody
<b>Description</b>	Rabbit Polyclonal Antibody
<b>Host</b>	Rabbit
<b>Application</b>	WB,IHC-P,IF-P,IF-F,ICC/IF,ELISA
<b>Reactivity</b>	Human,Rat,Mouse

## Performance

<b>Conjugation</b>	Unconjugated
<b>Modification</b>	Unmodified
<b>Isotype</b>	IgG
<b>Clonality</b>	Polyclonal
<b>Form</b>	Liquid
<b>Storage</b>	Store at 4°C short term. Aliquot and store at -20°C long term. Avoid freeze/thaw cycles.
<b>Buffer</b>	Liquid in PBS containing 50% glycerol, 0.5% BSA and 0.02% New type preservative N.
<b>Purification</b>	Affinity purification

## Immunogen

<b>Gene Name</b>	IFIT1
<b>Alternative Names</b>	IFIT1; G10P1; IFI56; IFNAI1; ISG56; Interferon-induced protein with tetratricopeptide repeats 1; IFIT-1; Interferon-induced 56 kDa protein; IFI-56K; P56
<b>Gene ID</b>	3434.0
<b>SwissProt ID</b>	P09914.The antiserum was produced against synthesized peptide derived from human IFIT1. AA range:41-90

## Application

<b>Dilution Ratio</b>	WB 1:500-1:2000, IHC-P 1:100-1:300, ELISA 1:40000, IF-P/IF-F/ICC/IF 1:50-200
<b>Molecular Weight</b>	55kDa

**Product Name: IFI-56K Rabbit Polyclonal Antibody**  
**Catalog #: APRab12376**

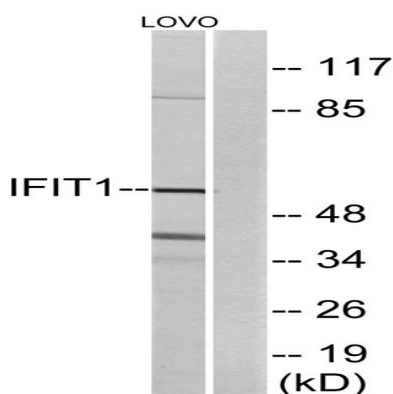


## Background

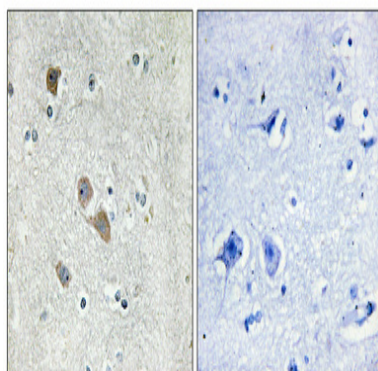
This gene encodes a protein containing tetratricopeptide repeats that was originally identified as induced upon treatment with interferon. The encoded protein may inhibit viral replication and translational initiation. This gene is located in a cluster on chromosome 10 with five other closely related genes. There is a pseudogene for this gene on chromosome 13. Alternatively spliced transcript variants encoding multiple isoforms have been observed. [provided by RefSeq, Aug 2012],induction:By interferons.,similarity:Belongs to the IFIT family.,similarity:Contains 10 TPR repeats.,

## Research Area

## Image Data



Western blot analysis of lysates from LOVO cells, using IFIT1 Antibody. The lane on the right is blocked with the synthesized peptide.



Immunohistochemical analysis of paraffin-embedded Human brain. Antibody was diluted at 1:100 (4°,overnight) . High-pressure and temperature Tris-EDTA,pH8.0 was used for antigen retrieval. Negative contrl (right) obtaned from antibody was pre-absorbed by immunogen peptide.

## Note

For research use only.

**Product Name: IFI-56K Rabbit Polyclonal Antibody**  
**Catalog #: APRab12376**

---

