

## Summary

<b>Production Name</b>	IARS2 Rabbit Polyclonal Antibody
<b>Description</b>	Rabbit Polyclonal Antibody
<b>Host</b>	Rabbit
<b>Application</b>	WB,IHC-P,IF-P,IF-F,ICC/IF,ELISA
<b>Reactivity</b>	Human,Mouse,Monkey

## Performance

<b>Conjugation</b>	Unconjugated
<b>Modification</b>	Unmodified
<b>Isotype</b>	IgG
<b>Clonality</b>	Polyclonal
<b>Form</b>	Liquid
<b>Storage</b>	Store at 4°C short term. Aliquot and store at -20°C long term. Avoid freeze/thaw cycles.
<b>Buffer</b>	Liquid in PBS containing 50% glycerol, 0.5% BSA and 0.02% New type preservative N.
<b>Purification</b>	Affinity purification

## Immunogen

<b>Gene Name</b>	IARS2
<b>Alternative Names</b>	IARS2; Isoleucine--tRNA ligase; mitochondrial; Isoleucyl-tRNA synthetase; IleRS
<b>Gene ID</b>	55699.0
<b>SwissProt ID</b>	Q9NSE4.The antiserum was produced against synthesized peptide derived from human IARS2. AA range:71-120

## Application

<b>Dilution Ratio</b>	WB 1:500-1:2000, IHC-P 1:100-1:300, IF-P/IF-F/ICC/IF 1:200-1:1000, ELISA 1:20000.Not yet tested in other applications.
<b>Molecular Weight</b>	114kDa

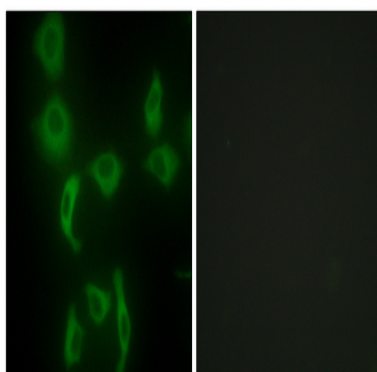
## Background

Aminoacyl-tRNA synthetases catalyze the aminoacylation of tRNA by their cognate amino acid. Because of their central role in linking amino acids with nucleotide triplets contained in tRNAs, aminoacyl-tRNA synthetases are thought to be among the first proteins that appeared in evolution. Two forms of isoleucine-tRNA synthetase exist, a cytoplasmic form and a mitochondrial form. This gene encodes the mitochondrial isoleucine-tRNA synthetase which belongs to the class-I aminoacyl-tRNA synthetase family. [provided by RefSeq, Dec 2014], catalytic activity:  $\text{ATP} + \text{L-isoleucine} + \text{tRNA(Ile)} = \text{AMP} + \text{diphosphate} + \text{L-isoleucyl-tRNA(Ile)}$ , similarity: Belongs to the class-I aminoacyl-tRNA synthetase family.,

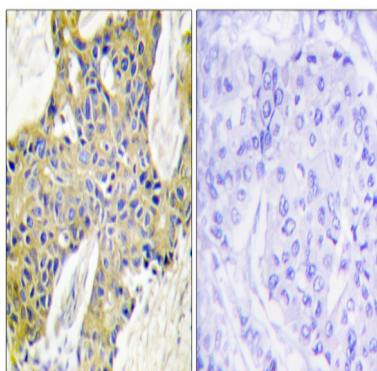
## Research Area

Valine; leucine and isoleucine biosynthesis; Aminoacyl-tRNA biosynthesis;

## Image Data

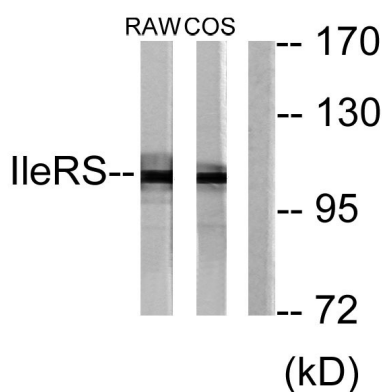


Immunofluorescence analysis of HepG2 cells, using IARS2 Antibody. The picture on the right is blocked with the synthesized peptide.

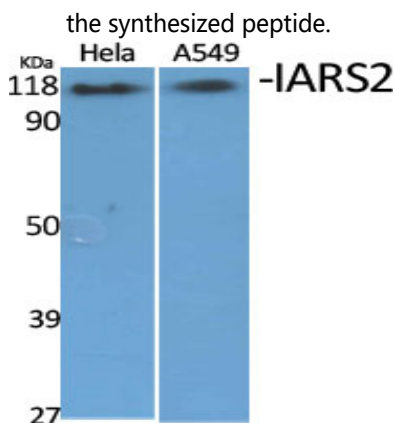


Immunohistochemistry analysis of paraffin-embedded human breast carcinoma tissue, using IARS2 Antibody. The picture on the right is blocked with the synthesized peptide.

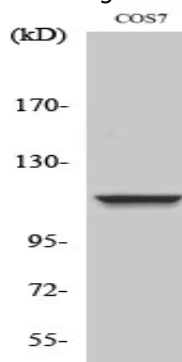
**Product Name: IARS2 Rabbit Polyclonal Antibody**  
**Catalog #: AP Rab12325**



Western blot analysis of lysates from RAW264.7 and COS7 cells, using IARS2 Antibody. The lane on the right is blocked with the synthesized peptide.



Western Blot analysis of various cells using IARS2 Polyclonal Antibody diluted at 1: 2000



Western Blot analysis of NIH-3T3 cells using IARS2 Polyclonal Antibody diluted at 1: 2000

## Note

For research use only.