

## Summary

<b>Production Name</b>	HoxD3 Rabbit Polyclonal Antibody
<b>Description</b>	Rabbit Polyclonal Antibody
<b>Host</b>	Rabbit
<b>Application</b>	WB,IHC-P,IF-P,IF-F,ICC/IF,ELISA
<b>Reactivity</b>	Human,Mouse,Rat

## Performance

<b>Conjugation</b>	Unconjugated
<b>Modification</b>	Unmodified
<b>Isotype</b>	IgG
<b>Clonality</b>	Polyclonal
<b>Form</b>	Liquid
<b>Storage</b>	Store at 4°C short term. Aliquot and store at -20°C long term. Avoid freeze/thaw cycles.
<b>Buffer</b>	Liquid in PBS containing 50% glycerol, 0.5% BSA and 0.02% New type preservative N.
<b>Purification</b>	Affinity purification

## Immunogen

<b>Gene Name</b>	HOXD3
<b>Alternative Names</b>	HOXD3; HOX1D; HOX4A; Homeobox protein Hox-D3; Homeobox protein Hox-4A
<b>Gene ID</b>	3232.0
<b>SwissProt ID</b>	P31249.The antiserum was produced against synthesized peptide derived from the Internal region of human HOXD3. AA range:211-260

## Application

<b>Dilution Ratio</b>	WB 1:500-1:2000, IHC-P 1:100-300, ELISA 1:20000, IF-P/IF-F/ICC/IF 1:50-200
<b>Molecular Weight</b>	45kDa

## Background

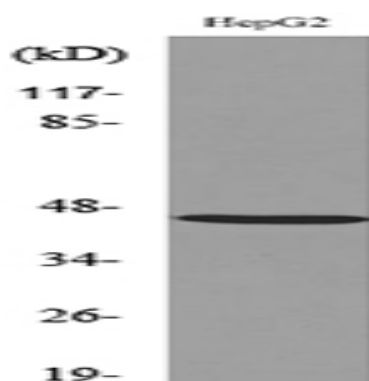
**Product Name: HoxD3 Rabbit Polyclonal Antibody**  
**Catalog #: AP Rab12179**



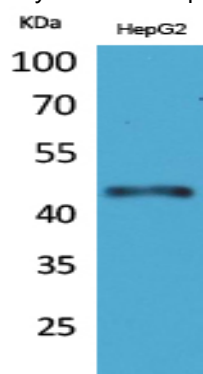
This gene belongs to the homeobox family of genes. The homeobox genes encode a highly conserved family of transcription factors that play an important role in morphogenesis in all multicellular organisms. Mammals possess four similar homeobox gene clusters, HOXA, HOXB, HOXC and HOXD, located on different chromosomes, consisting of 9 to 11 genes arranged in tandem. This gene is one of several homeobox HOXD genes located at 2q31-2q37 chromosome regions. Deletions that removed the entire HOXD gene cluster or 5' end of this cluster have been associated with severe limb and genital abnormalities. The protein encoded by this gene may play a role in the regulation of cell adhesion processes. [provided by RefSeq, Jul 2008], caution: It is uncertain whether Met-1 or Met-17 is the initiator., function: Sequence-specific transcription factor which is part of a developmental regulatory system that provides cells with specific positional identities on the anterior-posterior axis., similarity: Belongs to the Antp homeobox family., similarity: Contains 1 homeobox DNA-binding domain.,

## Research Area

## Image Data

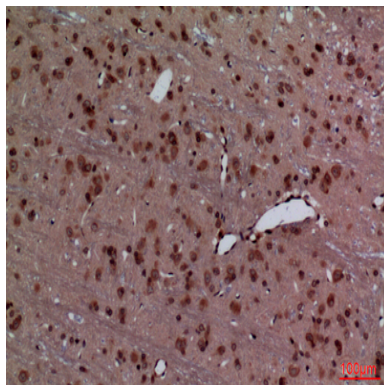


Western blot analysis of lysate from HepG2 cells, using HOXD3 Antibody.

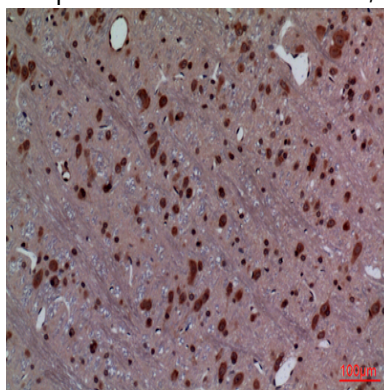


Western Blot analysis of HepG2 cells using HoxD3 Polyclonal Antibody.. Secondary antibody was diluted at 1:20000 cells nucleus extracted by Minute TM Cytoplasmic and Nuclear Fractionation kit (SC-003, Invent biotech, MN, USA) .

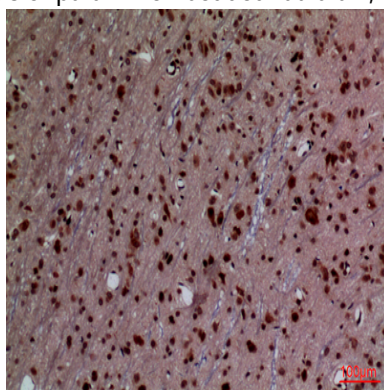
**Product Name: HoxD3 Rabbit Polyclonal Antibody**  
**Catalog #: APRab12179**



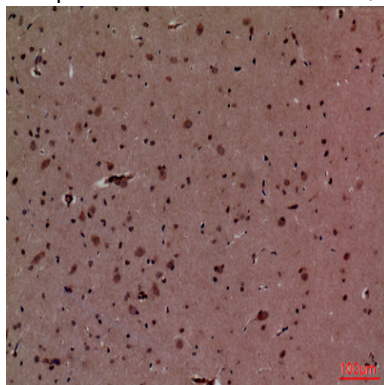
Immunohistochemical analysis of paraffin-embedded rat-brain, antibody was diluted at 1:100



Immunohistochemical analysis of paraffin-embedded rat-brain, antibody was diluted at 1:100



Immunohistochemical analysis of paraffin-embedded rat-brain, antibody was diluted at 1:100

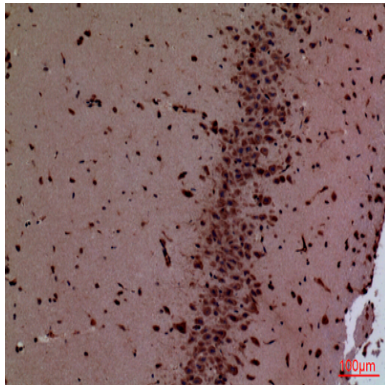


**Product Name: HoxD3 Rabbit Polyclonal Antibody**  
**Catalog #: APRab12179**

---



Immunohistochemical analysis of paraffin-embedded mouse-brain, antibody was diluted at 1:100



Immunohistochemical analysis of paraffin-embedded mouse-brain, antibody was diluted at 1:100

### **Note**

For research use only.