

Summary

Production Name	HMG-2 Rabbit Polyclonal Antibody
Description	Rabbit Polyclonal Antibody
Host	Rabbit
Application	WB,IHC-P,IF-P,IF-F,ICC/IF,ELISA
Reactivity	Human,Mouse,Rat

Performance

Conjugation	Unconjugated
Modification	Unmodified
Isotype	IgG
Clonality	Polyclonal
Form	Liquid
Storage	Store at 4°C short term. Aliquot and store at -20°C long term. Avoid freeze/thaw cycles.
Buffer	Liquid in PBS containing 50% glycerol, 0.5% BSA and 0.02% New type preservative N.
Purification	Affinity purification

Immunogen

Gene Name	HMGB2
Alternative Names	HMGB2; HMG2; High mobility group protein B2; High mobility group protein 2; HMG-2
Gene ID	3148.0
SwissProt ID	P26583.The antiserum was produced against synthesized peptide derived from human HMGB2. AA range:131-180

Application

Dilution Ratio	WB 1:500-1:2000, IHC-P 1:100-1:300, IF-P/IF-F/ICC/IF 1:200-1:1000, ELISA 1:10000.Not yet tested in other applications.
Molecular Weight	27kDa

Product Name: HMG-2 Rabbit Polyclonal Antibody
Catalog #: AP Rab12103

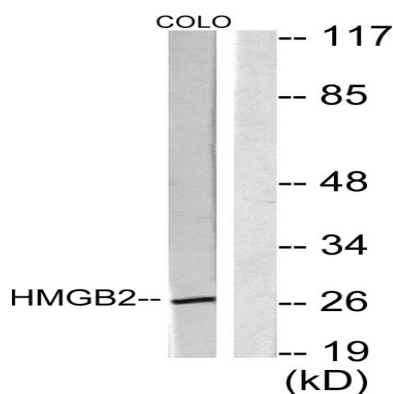


Background

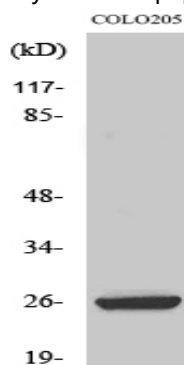
This gene encodes a member of the non-histone chromosomal high mobility group protein family. The proteins of this family are chromatin-associated and ubiquitously distributed in the nucleus of higher eukaryotic cells. In vitro studies have demonstrated that this protein is able to efficiently bend DNA and form DNA circles. These studies suggest a role in facilitating cooperative interactions between cis-acting proteins by promoting DNA flexibility. This protein was also reported to be involved in the final ligation step in DNA end-joining processes of DNA double-strand breaks repair and V(D)J recombination. [provided by RefSeq, Jul 2008],function: Binds preferentially single-stranded DNA and unwinds double stranded DNA.,similarity: Belongs to the HMGB family.,similarity: Contains 2 HMG box DNA-binding domains.,subunit: Component of the SET complex, which also contains SET, ANP32A, APEX1 and NME1. Directly interacts with SET.,

Research Area

Image Data



Western blot analysis of lysates from COLO205 cells, using HMGB2 Antibody. The lane on the right is blocked with the synthesized peptide.



Western Blot analysis of various cells using HMG-2 Polyclonal Antibody

Product Name: HMG-2 Rabbit Polyclonal Antibody
Catalog #: APRab12103



Note

For research use only.