

Summary

Production Name	HLA-DO β Rabbit Polyclonal Antibody
Description	Rabbit Polyclonal Antibody
Host	Rabbit
Application	WB,ELISA
Reactivity	Human

Performance

Conjugation	Unconjugated
Modification	Unmodified
Isotype	IgG
Clonality	Polyclonal
Form	Liquid
Storage	Store at 4°C short term. Aliquot and store at -20°C long term. Avoid freeze/thaw cycles.
Buffer	Liquid in PBS containing 50% glycerol, 0.5% BSA and 0.02% New type preservative N.
Purification	Affinity purification

Immunogen

Gene Name	HLA-DOB
Alternative Names	HLA-DOB; HLA class II histocompatibility antigen; DO beta chain; MHC class II antigen DOB
Gene ID	3112.0
SwissProt ID	P13765.The antiserum was produced against synthesized peptide derived from human HLA-DOB. AA range:1-50

Application

Dilution Ratio	WB 1:500-1:2000, ELISA 1:40000.Not yet tested in other applications.
Molecular Weight	30kDa

Product Name: HLA-DO β Rabbit Polyclonal Antibody
Catalog #: APRab12082



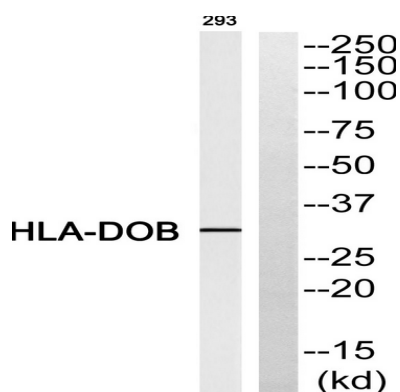
Background

HLA-DO β belongs to the HLA class II beta chain paralogues. This class II molecule is a heterodimer consisting of an alpha (DOA) and a beta chain (DOB), both anchored in the membrane. It is located in intracellular vesicles. DO suppresses peptide loading of MHC class II molecules by inhibiting HLA-DM. Class II molecules are expressed in antigen presenting cells (APC: B lymphocytes, dendritic cells, macrophages). The beta chain is approximately 26-28 kDa and its gene contains 6 exons. Exon one encodes the leader peptide, exons 2 and 3 encode the two extracellular domains, exon 4 encodes the transmembrane domain and exon 5 encodes the cytoplasmic tail. [provided by RefSeq, Jul 2008],function:Important modulator in the HLA class II restricted antigen presentation pathway by interaction with the HLA-DM molecule.,polymorphism:The following alleles of DOB are known: DOB*0101, DOB*0102, DOB*0103 and DOB*0104. The sequence shown is that of DOB*0101.,similarity:Belongs to the MHC class II family.,similarity:Contains 1 Ig-like C1-type (immunoglobulin-like) domain.,subunit:Heterodimer of an alpha chain (DOA) and a beta chain (DOB),.

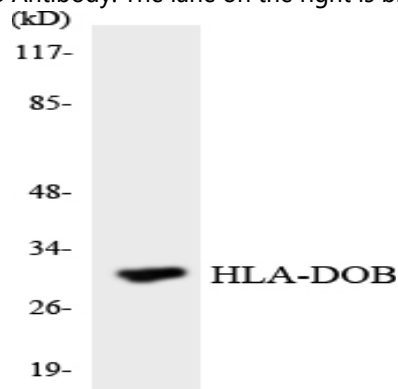
Research Area

Cell adhesion molecules (CAMs);Antigen processing and presentation;Intestinal immune network for IgA production;Type I diabetes mellitus;Asthma;Autoimmune thyroid disease;Systemic lupus erythematosus;Allograft rejection;Graft-versus-host disease;Viral myocarditis;

Image Data



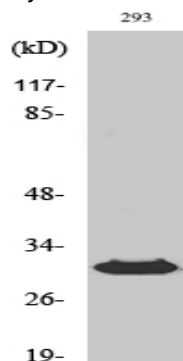
Western blot analysis of HLA-DOB Antibody. The lane on the right is blocked with the HLA-DOB peptide.



Product Name: HLA-DO β Rabbit Polyclonal Antibody
Catalog #: APRab12082



Western blot analysis of the lysates from HeLa cells using HLA-DOB antibody.



Western Blot analysis of various cells using HLA-DO β Polyclonal Antibody diluted at 1: 1000

Note

For research use only.