

Summary

Production Name	HLA-DO α Rabbit Polyclonal Antibody
Description	Rabbit Polyclonal Antibody
Host	Rabbit
Application	WB,IHC-P,IF-P,IF-F,ICC/IF,ELISA
Reactivity	Human

Performance

Conjugation	Unconjugated
Modification	Unmodified
Isotype	IgG
Clonality	Polyclonal
Form	Liquid
Storage	Store at 4°C short term. Aliquot and store at -20°C long term. Avoid freeze/thaw cycles.
Buffer	Liquid in PBS containing 50% glycerol, 0.5% BSA and 0.02% New type preservative N.
Purification	Affinity purification

Immunogen

Gene Name	HLA-DOA
Alternative Names	HLA-DOA; HLA-DNA; HLA-DZA; HLA class II histocompatibility antigen; DO alpha chain; MHC DN-alpha; MHC DZ alpha; MHC class II antigen DOA
Gene ID	3111.0
SwissProt ID	P06340.The antiserum was produced against synthesized peptide derived from human HLA-DOA. AA range:71-120

Application

Dilution Ratio	WB 1:500-1:2000, IHC-P 1:100-1:300, ELISA 1:40000, IF-P/IF-F/ICC/IF 1:50-200
Molecular Weight	34kDa

Product Name: HLA-DO α Rabbit Polyclonal Antibody
Catalog #: APRab12081



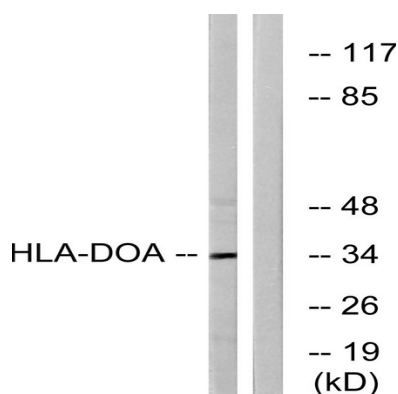
Background

HLA-DOA belongs to the HLA class II alpha chain paralogues. HLA-DOA forms a heterodimer with HLA-DOB. The heterodimer, HLA-DO, is found in lysosomes in B cells and regulates HLA-DM-mediated peptide loading on MHC class II molecules. In comparison with classical HLA class II molecules, this gene exhibits very little sequence variation, especially at the protein level. [provided by RefSeq, Jul 2008],function:Important modulator in the HLA class II restricted antigen presentation pathway by interaction with the HLA-DM molecule.,polymorphism:The only allele of DOA known is DOA*0101 which is shown here.,similarity:Belongs to the MHC class II family.,similarity:Contains 1 Ig-like C1-type (immunoglobulin-like) domain.,subunit:Heterodimer of an alpha chain (DOA) and a beta chain (DOB),.

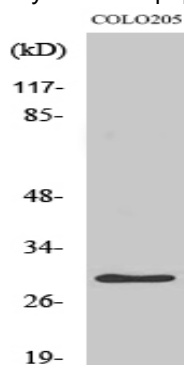
Research Area

Cell adhesion molecules (CAMs);Antigen processing and presentation;Intestinal immune network for IgA production;Type I diabetes mellitus;Asthma;Autoimmune thyroid disease;Systemic lupus erythematosus;Allograft rejection;Graft-versus-host disease;Viral myocarditis;

Image Data

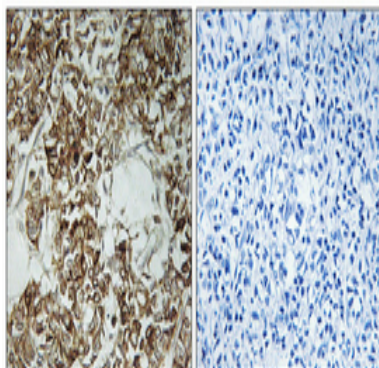


Western blot analysis of lysates from COLO cells, using HLA-DOA Antibody. The lane on the right is blocked with the synthesized peptide.



Western Blot analysis of various cells using HLA-DO α Polyclonal Antibody

Product Name: HLA-DO α Rabbit Polyclonal Antibody
Catalog #: APRab12081



Immunohistochemical analysis of paraffin-embedded Human breast cancer. Antibody was diluted at 1:100 (4°,overnight) . High-pressure and temperature Tris-EDTA,pH8.0 was used for antigen retrieval. Negative contrl (right) obtaned from antibody was pre-absorbed by immunogen peptide.

Note

For research use only.