

## Summary

<b>Production Name</b>	HAND1 Rabbit Polyclonal Antibody
<b>Description</b>	Rabbit Polyclonal Antibody
<b>Host</b>	Rabbit
<b>Application</b>	IHC-P,IF-P,IF-F,ICC/IF,ELISA
<b>Reactivity</b>	Human,Mouse,Rat

## Performance

<b>Conjugation</b>	Unconjugated
<b>Modification</b>	Unmodified
<b>Isotype</b>	IgG
<b>Clonality</b>	Polyclonal
<b>Form</b>	Liquid
<b>Storage</b>	Store at 4°C short term. Aliquot and store at -20°C long term. Avoid freeze/thaw cycles.
<b>Buffer</b>	Liquid in PBS containing 50% glycerol, 0.5% BSA and 0.02% New type preservative N.
<b>Purification</b>	Affinity purification

## Immunogen

<b>Gene Name</b>	HAND1 HAND1; BHLHA27; EHAND; Heart- and neural crest derivatives-expressed protein 1;
<b>Alternative Names</b>	Class A basic helix-loop-helix protein 27; bHLHa27; Extraembryonic tissues; heart, autonomic nervous system and neural crest derivatives-expressed protein 1; eH
<b>Gene ID</b>	9421.0
<b>SwissProt ID</b>	O96004.The antiserum was produced against synthesized peptide derived from human HAND1. AA range:71-120

## Application

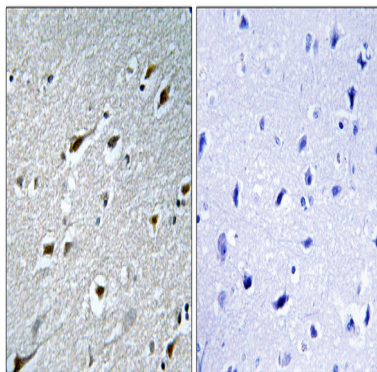
<b>Dilution Ratio</b>	IHC-P 1:100-1:300, ELISA 1:20000, IF-P/IF-F/ICC/IF 1:50-200
<b>Molecular Weight</b>	

## Background

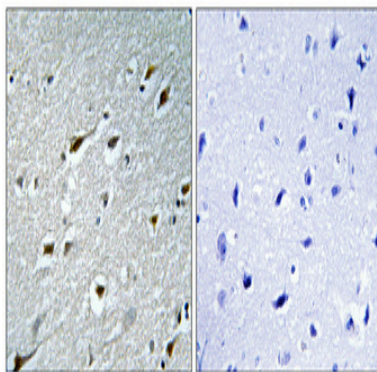
The protein encoded by this gene belongs to the basic helix-loop-helix family of transcription factors. This gene product is one of two closely related family members, the HAND proteins, which are asymmetrically expressed in the developing ventricular chambers and play an essential role in cardiac morphogenesis. Working in a complementary fashion, they function in the formation of the right ventricle and aortic arch arteries, implicating them as mediators of congenital heart disease. In addition, it has been suggested that this transcription factor may be required for early trophoblast differentiation. [provided by RefSeq, Jul 2008],function:Plays an essential role in early trophoblast differentiation and in cardiac morphogenesis. In the adult, could be required for ongoing expression of cardiac-specific genes. Binds the DNA sequence 5'-NRTCTG-3' (non-canonical E-box),similarity:Contains 1 basic helix-loop-helix (bHLH) domain.,subunit:Efficient DNA binding requires dimerization with another bHLH protein. Forms homodimers and heterodimers with TCF3 gene products E12 and E47, HAND2 and HEY1, HEY2 and HEYL (hairy-related transcription factors),tissue specificity:Heart,.

## Research Area

## Image Data



Immunohistochemistry analysis of paraffin-embedded human brain tissue, using HAND1 Antibody. The picture on the right is blocked with the synthesized peptide.



**Product Name: HAND1 Rabbit Polyclonal Antibody**  
**Catalog #: APRab11893**



---

Immunohistochemical analysis of paraffin-embedded Human brain. Antibody was diluted at 1:100 (4°,overnight) . High-pressure and temperature Tris-EDTA,pH8.0 was used for antigen retrieval. Negative contrl (right) obtained from antibody was pre-absorbed by immunogen peptide.

### **Note**

For research use only.