

## Summary

<b>Production Name</b>	Gz- $\alpha$ Rabbit Polyclonal Antibody
<b>Description</b>	Rabbit Polyclonal Antibody
<b>Host</b>	Rabbit
<b>Application</b>	WB,IHC-P,IF-P,IF-F,ICC/IF,ELISA
<b>Reactivity</b>	Human,Mouse,Rat,Monkey

## Performance

<b>Conjugation</b>	Unconjugated
<b>Modification</b>	Unmodified
<b>Isotype</b>	IgG
<b>Clonality</b>	Polyclonal
<b>Form</b>	Liquid
<b>Storage</b>	Store at 4°C short term. Aliquot and store at -20°C long term. Avoid freeze/thaw cycles.
<b>Buffer</b>	Liquid in PBS containing 50% glycerol, 0.5% BSA and 0.02% New type preservative N.
<b>Purification</b>	Affinity purification

## Immunogen

<b>Gene Name</b>	GNAZ
<b>Alternative Names</b>	GNAZ; Guanine nucleotide-binding protein G(z) subunit alpha; G(x) alpha chain; Gz-alpha
<b>Gene ID</b>	2781.0
<b>SwissProt ID</b>	P19086.The antiserum was produced against synthesized peptide derived from human Gz-alpha. AA range:1-50

## Application

<b>Dilution Ratio</b>	WB 1:500-1:2000, IHC-P 1:100-1:300, ELISA 1:40000, IF-P/IF-F/ICC/IF 1:50-200
<b>Molecular Weight</b>	41kDa

**Product Name: Gz- $\alpha$  Rabbit Polyclonal Antibody**  
**Catalog #: APRab11862**

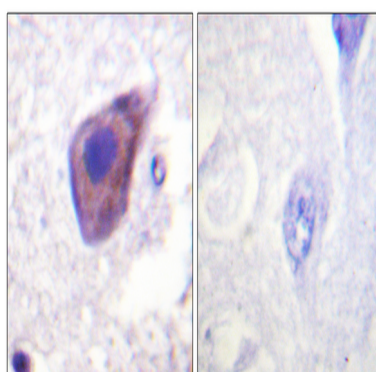
## Background

G protein subunit alpha z(GNAZ) Homo sapiens The protein encoded by this gene is a member of a G protein subfamily that mediates signal transduction in pertussis toxin-insensitive systems. This encoded protein may play a role in maintaining the ionic balance of perilymphatic and endolymphatic cochlear fluids. [provided by RefSeq, Jul 2008],function:Guanine nucleotide-binding proteins (G proteins) are involved as modulators or transducers in various transmembrane signaling systems.,similarity:Belongs to the G-alpha family. G(i/o/t/z) subfamily.,subunit:G proteins are composed of 3 units; alpha, beta and gamma. The alpha chain contains the guanine nucleotide binding site.,

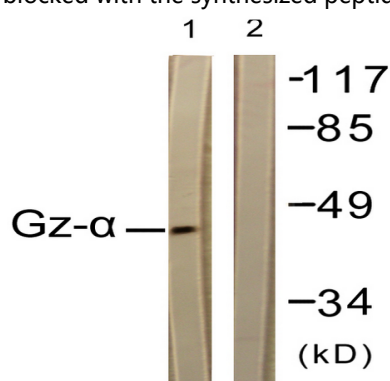
## Research Area

Long-term depression;

## Image Data

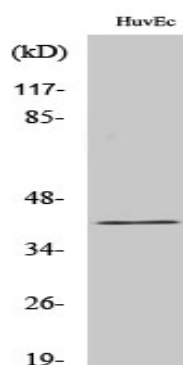


Immunohistochemistry analysis of paraffin-embedded human brain tissue, using Gz-alpha Antibody. The picture on the right is blocked with the synthesized peptide.



Western blot analysis of lysates from COS7 cells, treated with PMA 125ng/ml 30', using Gz-alpha Antibody. The lane on the right is blocked with the synthesized peptide.

**Product Name: Gz- $\alpha$  Rabbit Polyclonal Antibody**  
**Catalog #: APRab11862**



Western Blot analysis of various cells using Gz- $\alpha$  Polyclonal Antibody

### **Note**

For research use only.