

Product Name: GSC Rabbit Polyclonal Antibody
Catalog #: APRab11809



Summary

Production Name	GSC Rabbit Polyclonal Antibody
Description	Rabbit Polyclonal Antibody
Host	Rabbit
Application	IHC-P,IF-P,IF-F,ICC/IF,ELISA
Reactivity	Human,Mouse,Rat

Performance

Conjugation	Unconjugated
Modification	Unmodified
Isotype	IgG
Clonality	Polyclonal
Form	Liquid
Storage	Store at 4°C short term. Aliquot and store at -20°C long term. Avoid freeze/thaw cycles.
Buffer	Liquid in PBS containing 50% glycerol, 0.5% BSA and 0.02% New type preservative N.
Purification	Affinity purification

Immunogen

Gene Name	GSC
Alternative Names	Homeobox protein goosecoid
Gene ID	145258.0
SwissProt ID	P56915.Synthetic peptide from human protein at AA range: 207-256

Application

Dilution Ratio	IHC-P 1:50-200, ELISA 1:10000-20000, IF-P/IF-F/ICC/IF 1:50-200
Molecular Weight	

Background

goosecoid homeobox(GSC) Homo sapiens This gene encodes a member of the bicoid subfamily of the paired (PRD)

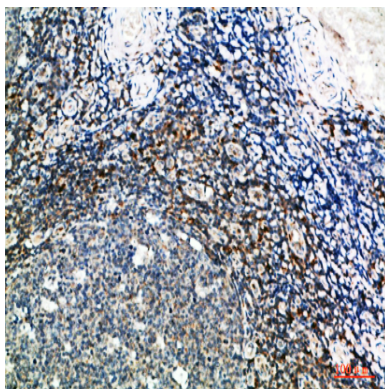
Product Name: GSC Rabbit Polyclonal Antibody
Catalog #: APRab11809



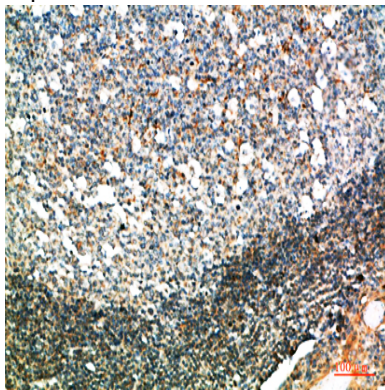
homeobox family of proteins. The encoded protein acts as a transcription factor and may be autoregulatory. A similar protein in mice plays a role in craniofacial and rib cage development during embryogenesis. [provided by RefSeq, Jul 2008],function:Regulates chordin (CHRD). May play a role in spatial programing within discrete embryonic fields or lineage compartments during organogenesis.,similarity:Belongs to the paired homeobox family. Bicoid subfamily.,similarity:Contains 1 homeobox DNA-binding domain.,

Research Area

Image Data



Immunohistochemical analysis of paraffin-embedded human-tonsil, antibody was diluted at 1:200



Immunohistochemical analysis of paraffin-embedded human-tonsil, antibody was diluted at 1:200

Note

For research use only.