

Product Name: GS28 Rabbit Polyclonal Antibody
Catalog #: APRab11806



Summary

Production Name	GS28 Rabbit Polyclonal Antibody
Description	Rabbit Polyclonal Antibody
Host	Rabbit
Application	WB,ELISA
Reactivity	Human,Rat,Mouse

Performance

Conjugation	Unconjugated
Modification	Unmodified
Isotype	IgG
Clonality	Polyclonal
Form	Liquid
Storage	Store at 4°C short term. Aliquot and store at -20°C long term. Avoid freeze/thaw cycles.
Buffer	Liquid in PBS containing 50% glycerol, 0.5% BSA and 0.02% New type preservative N.
Purification	Affinity purification

Immunogen

Gene Name	GOSR1
Alternative Names	GOSR1; GS28; Golgi SNAP receptor complex member 1; 28 kDa Golgi SNARE protein; 28 kDa cis-Golgi SNARE p28; GOS-28
Gene ID	9527.0
SwissProt ID	O95249. The antiserum was produced against synthesized peptide derived from human GOSR1. AA range:11-60

Application

Dilution Ratio	WB 1:500-1:2000, ELISA 1:10000.Not yet tested in other applications.
Molecular Weight	28kDa

Background

Product Name: GS28 Rabbit Polyclonal Antibody
Catalog #: APRab11806

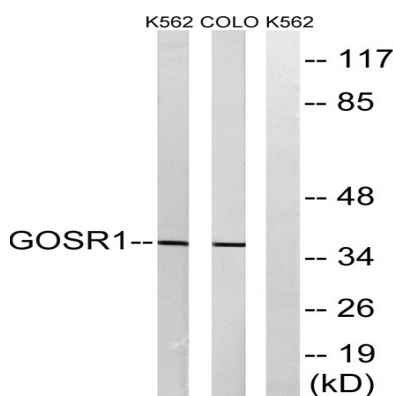


This gene encodes a trafficking membrane protein which transports proteins among the endoplasmic reticulum and the Golgi and between Golgi compartments. This protein is considered an essential component of the Golgi SNAP receptor (SNARE) complex. Alternatively spliced transcript variants encoding distinct isoforms have been found for this gene. [provided by RefSeq, Jul 2008],function:Involved in transport from the ER to the Golgi apparatus as well as in intra-Golgi transport.,similarity:Belongs to the GOSR1 family.,subcellular location:Enriched on vesicular components at the terminal rims of the Golgi.,subunit:Interacts with GABARAPL2. Identified in a unique SNARE complex composed of the Golgi SNAREs GOSR2, STX5 and YKT6.,

Research Area

SNARE interactions in vesicular transport;

Image Data



Western blot analysis of lysates from COLO and K562 cells, using GOSR1 Antibody. The lane on the right is blocked with the synthesized peptide.

Note

For research use only.