

Summary

Production Name	Gremlin-2 Rabbit Polyclonal Antibody
Description	Rabbit Polyclonal Antibody
Host	Rabbit
Application	WB,IHC-P,IF-P,IF-F,ICC/IF,ELISA
Reactivity	Human,Mouse

Performance

Conjugation	Unconjugated
Modification	Unmodified
Isotype	IgG
Clonality	Polyclonal
Form	Liquid
Storage	Store at 4°C short term. Aliquot and store at -20°C long term. Avoid freeze/thaw cycles.
Buffer	Liquid in PBS containing 50% glycerol, 0.5% BSA and 0.02% New type preservative N.
Purification	Affinity purification

Immunogen

Gene Name	GREM2
Alternative Names	Gremlin-2 (Cysteine knot superfamily 1, BMP antagonist 2;DAN domain family member 3;Protein related to DAN and cerberus)
Gene ID	64388.0
SwissProt ID	Q9H772.The antiserum was produced against synthesized peptide derived from the Internal region of human GREM2. AA range:71-120

Application

Dilution Ratio	WB 1:500-2000, IHC-P 1:500-200, ELISA 1:10000-20000, IF-P/IF-F/ICC/IF 1:50-200
Molecular Weight	19kDa

Product Name: Gremlin-2 Rabbit Polyclonal Antibody
Catalog #: AP Rab11757

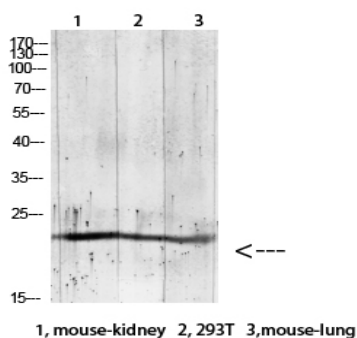


Background

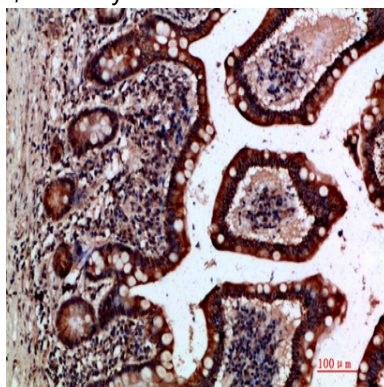
This gene encodes a member of the BMP (bone morphogenic protein) antagonist family. Like BMPs, BMP antagonists contain cystine knots and typically form homo- and heterodimers. The CAN (cerberus and dan) subfamily of BMP antagonists, to which this gene belongs, is characterized by a C-terminal cystine knot with an eight-membered ring. The antagonistic effect of the secreted glycosylated protein encoded by this gene is likely due to its direct binding to BMP proteins. As an antagonist of BMP, this gene may play a role in regulating organogenesis, body patterning, and tissue differentiation. [provided by RefSeq, Jul 2008],function:Cytokine that inhibits the activity of BMP2 and BMP4 in a dose-dependent manner. Antagonized BMP4-induced suppression of progesterone production in granulosa cells.,similarity:Belongs to the DAN family.,similarity:Contains 1 CTCK (C-terminal cystine knot-like) domain.,subunit:Interacts with BMP2 and BMP4.,

Research Area

Image Data

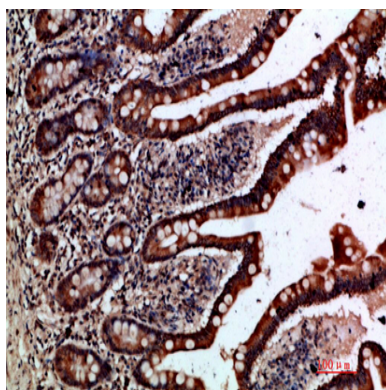


Western blot analysis of RAT-brain lysate, antibody was diluted at 1000. Secondary antibody was diluted at 1:20000

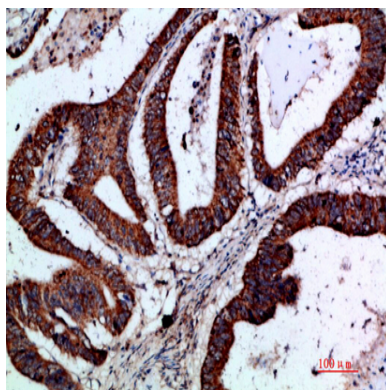


Immunohistochemical analysis of paraffin-embedded human-small-intestine, antibody was diluted at 1:200

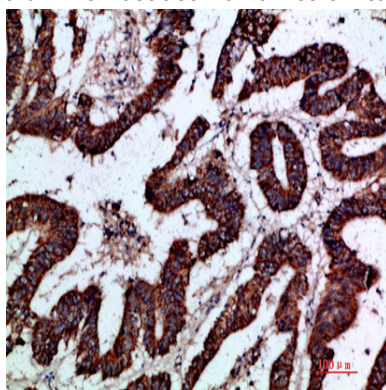
Product Name: Gremlin-2 Rabbit Polyclonal Antibody
Catalog #: APRab11757



Immunohistochemical analysis of paraffin-embedded human-small-intestine, antibody was diluted at 1:200



Immunohistochemical analysis of paraffin-embedded human-colon-cancer, antibody was diluted at 1:200



Immunohistochemical analysis of paraffin-embedded human-colon-cancer, antibody was diluted at 1:200

Note

For research use only.