

## Summary

<b>Production Name</b>	GPR91 Rabbit Polyclonal Antibody
<b>Description</b>	Rabbit Polyclonal Antibody
<b>Host</b>	Rabbit
<b>Application</b>	WB,IF-P,IF-F,ICC/IF,ELISA
<b>Reactivity</b>	Human,Mouse,Rat,Pig

## Performance

<b>Conjugation</b>	Unconjugated
<b>Modification</b>	Unmodified
<b>Isotype</b>	IgG
<b>Clonality</b>	Polyclonal
<b>Form</b>	Liquid
<b>Storage</b>	Store at 4°C short term. Aliquot and store at -20°C long term. Avoid freeze/thaw cycles.
<b>Buffer</b>	Liquid in PBS containing 50% glycerol, 0.5% BSA and 0.02% New type preservative N.
<b>Purification</b>	Affinity purification

## Immunogen

<b>Gene Name</b>	SUCNR1
<b>Alternative Names</b>	SUCNR1; GPR91; Succinate receptor 1; G-protein coupled receptor 91; P2Y purinoceptor 1-like
<b>Gene ID</b>	56670.0
<b>SwissProt ID</b>	Q9BXA5. The antiserum was produced against synthesized peptide derived from human SUCNR1. AA range:100-149

## Application

<b>Dilution Ratio</b>	WB 1:500-1:2000, IF-P/IF-F/ICC/IF 1:200-1:1000, ELISA 1:10000. Not yet tested in other applications.
<b>Molecular Weight</b>	38kDa

**Product Name: GPR91 Rabbit Polyclonal Antibody**  
**Catalog #: AP Rab11708**

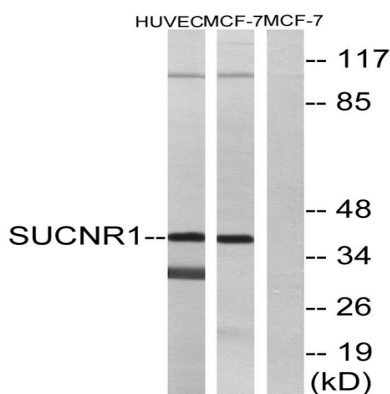


## Background

This gene encodes a G-protein-coupled receptor for succinate, an intermediate molecule of the citric acid cycle. It is involved in the promotion of hematopoietic progenitor cell development, and it has a potential role in renovascular hypertension which has known correlations to renal failure, diabetes and atherosclerosis. [provided by RefSeq, Oct 2009],function:Receptor for succinate.,similarity:Belongs to the G-protein coupled receptor 1 family.,tissue specificity:Expressed specifically in kidney.,

## Research Area

## Image Data



Western blot analysis of lysates from HUVEC and MCF-7 cells, using SUCNR1 Antibody. The lane on the right is blocked with the synthesized peptide.

## Note

For research use only.