

**Product Name: GPR87 Rabbit Polyclonal Antibody**  
**Catalog #: AP Rab11705**



## Summary

<b>Production Name</b>	GPR87 Rabbit Polyclonal Antibody
<b>Description</b>	Rabbit Polyclonal Antibody
<b>Host</b>	Rabbit
<b>Application</b>	WB,IF-P,IF-F,ICC/IF,ELISA
<b>Reactivity</b>	Human,Mouse

## Performance

<b>Conjugation</b>	Unconjugated
<b>Modification</b>	Unmodified
<b>Isotype</b>	IgG
<b>Clonality</b>	Polyclonal
<b>Form</b>	Liquid
<b>Storage</b>	Store at 4°C short term. Aliquot and store at -20°C long term. Avoid freeze/thaw cycles.
<b>Buffer</b>	Liquid in PBS containing 50% glycerol, 0.5% BSA and 0.02% New type preservative N.
<b>Purification</b>	Affinity purification

## Immunogen

<b>Gene Name</b>	GPR87
<b>Alternative Names</b>	GPR87; GPR95; FKSG78; G-protein coupled receptor 87; G-protein coupled receptor 95
<b>Gene ID</b>	53836.0
<b>SwissProt ID</b>	Q9BY21.The antiserum was produced against synthesized peptide derived from human GPR87. AA range:221-270

## Application

<b>Dilution Ratio</b>	WB 1:500-1:2000, IF-P/IF-F/ICC/IF 1:200-1:1000, ELISA 1:5000.Not yet tested in other applications.
<b>Molecular Weight</b>	40kDa

**Product Name: GPR87 Rabbit Polyclonal Antibody**  
**Catalog #: AP Rab11705**

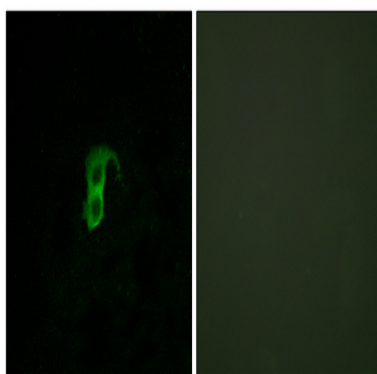


## Background

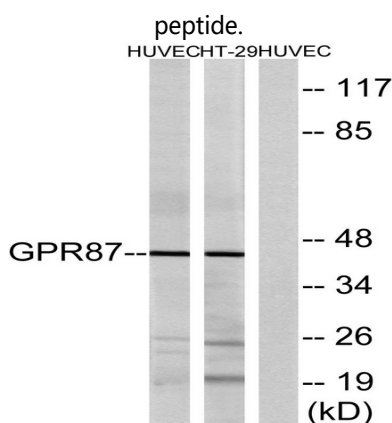
This gene encodes a G protein-coupled receptor and is located in a cluster of G protein-coupled receptor genes on chromosome 3. The encoded protein has been shown to be overexpressed in lung squamous cell carcinoma (PMID:18057535) and regulated by p53 (PMID:19602589). [provided by RefSeq, Nov 2011], function: Orphan receptor, similarity: Belongs to the G-protein coupled receptor 1 family, tissue specificity: Expressed in placenta and prostate. Weaker expression in thymus. Not expressed in thalamus, hippocampus, pons or cerebellum.

## Research Area

## Image Data



Immunofluorescence analysis of HUVEC cells, using GPR87 Antibody. The picture on the right is blocked with the synthesized peptide.



Western blot analysis of lysates from HUVEC and HT-29 cells, using GPR87 Antibody. The lane on the right is blocked with the synthesized peptide.

## Note

For research use only.