

Product Name: GPR25 Rabbit Polyclonal Antibody
Catalog #: APRab11669



Summary

Production Name	GPR25 Rabbit Polyclonal Antibody
Description	Rabbit Polyclonal Antibody
Host	Rabbit
Application	WB,ELISA
Reactivity	Human,Rat,Mouse

Performance

Conjugation	Unconjugated
Modification	Unmodified
Isotype	IgG
Clonality	Polyclonal
Form	Liquid
Storage	Store at 4°C short term. Aliquot and store at -20°C long term. Avoid freeze/thaw cycles.
Buffer	Liquid in PBS containing 50% glycerol, 0.5% BSA and 0.02% New type preservative N.
Purification	Affinity purification

Immunogen

Gene Name	GPR25
Alternative Names	GPR25; Probable G-protein coupled receptor 25
Gene ID	2848.0
SwissProt ID	O00155.The antiserum was produced against synthesized peptide derived from human GPR25. AA range:193-242

Application

Dilution Ratio	WB 1:500-1:2000, ELISA 1:5000.Not yet tested in other applications.
Molecular Weight	38kDa

Background

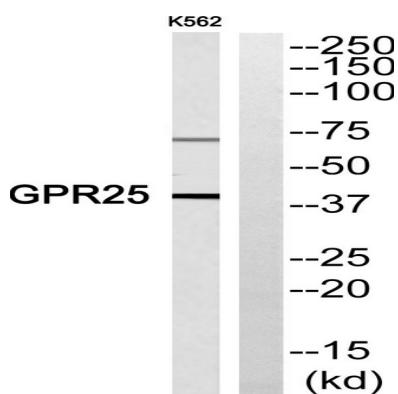
Product Name: GPR25 Rabbit Polyclonal Antibody
Catalog #: AP Rab11669



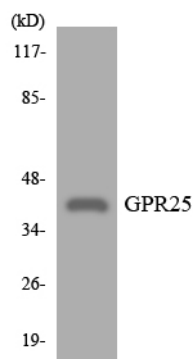
This gene is intronless and encodes a member of the G-protein coupled receptor 1 family. G-protein coupled receptors are membrane proteins which activate signaling cascades as a response to extracellular stress. This gene has been linked to arterial stiffness. [provided by RefSeq, Nov 2012],function:Orphan receptor.,similarity:Belongs to the G-protein coupled receptor 1 family.,

Research Area

Image Data



Western blot analysis of GPR25 Antibody. The lane on the right is blocked with the GPR25 peptide.



Western blot analysis of the lysates from K562 cells using GPR25 antibody.

Note

For research use only.