

Product Name: GPER Rabbit Polyclonal Antibody
Catalog #: APRab11609

Summary

Production Name	GPER Rabbit Polyclonal Antibody
Description	Rabbit Polyclonal Antibody
Host	Rabbit
Application	WB,ELISA
Reactivity	Human,Mouse,Rat

Performance

Conjugation	Unconjugated
Modification	Unmodified
Isotype	IgG
Clonality	Polyclonal
Form	Liquid
Storage	Store at 4°C short term. Aliquot and store at -20°C long term. Avoid freeze/thaw cycles.
Buffer	Liquid in PBS containing 50% glycerol, and 0.02% New type preservative N.
Purification	Affinity purification

Immunogen

Gene Name	GPER CEPR CMKRL2 DRY12 GPR30
Alternative Names	
Gene ID	2852.0
SwissProt ID	Q99527. Synthesized peptide derived from human protein . at AA range: 300-380

Application

Dilution Ratio	WB 1:500-2000, ELISA 1:5000-20000
Molecular Weight	41kDa

Background

This gene is a member of the G-protein coupled receptor 1 family and encodes a multi-pass membrane protein that localizes to the endoplasmic reticulum. The protein binds estrogen, resulting in intracellular calcium mobilization and

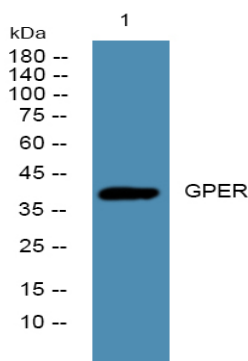
Product Name: GPER Rabbit Polyclonal Antibody
Catalog #: APRab11609



synthesis of phosphatidylinositol 3,4,5-trisphosphate in the nucleus. This protein therefore plays a role in the rapid nongenomic signaling events widely observed following stimulation of cells and tissues with estrogen. Alternate transcriptional splice variants which encode the same protein have been characterized. [provided by RefSeq, Jul 2008],function:Receptor for estrogen.,similarity:Belongs to the G-protein coupled receptor 1 family.,subcellular location:Protein has been detected in the cell membrane, endoplasmic reticulum and Golgi apparatus. It is currently unclear whether this is a cell surface or intracellular receptor.,tissue specificity:Ubiquitously expressed, but is most abundant in placenta. In brain regions, expressed as a 2.8 kb transcript in basal forebrain, frontal cortex, thalamus, hippocampus, caudate and putamen.,

Research Area

Image Data



Western blot analysis of lysates from KB cells, primary antibody was diluted at 1:1000, 4°over night

Note

For research use only.