

Product Name: GP141 Rabbit Polyclonal Antibody
Catalog #: APRab11590



Summary

Production Name	GP141 Rabbit Polyclonal Antibody
Description	Rabbit Polyclonal Antibody
Host	Rabbit
Application	WB,ELISA
Reactivity	Human,Mouse

Performance

Conjugation	Unconjugated
Modification	Unmodified
Isotype	IgG
Clonality	Polyclonal
Form	Liquid
Storage	Store at 4°C short term. Aliquot and store at -20°C long term. Avoid freeze/thaw cycles.
Buffer	Liquid in PBS containing 50% glycerol, and 0.02% New type preservative N.
Purification	Affinity purification

Immunogen

Gene Name	GPR141 PGR13
Alternative Names	
Gene ID	353345.0
SwissProt ID	Q7Z602. Synthesized peptide derived from part region of human protein

Application

Dilution Ratio	WB 1:500-2000, ELISA 1:5000-20000
Molecular Weight	

Background

GPR141 is a member of the rhodopsin family of G protein-coupled receptors (GPRs) (Fredriksson et al., 2003 [PubMed 14623098]).[supplied by OMIM, Mar 2008],function:Orphan receptor.,similarity:Belongs to the G-protein coupled receptor 1

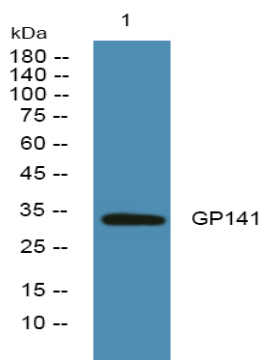
Product Name: GP141 Rabbit Polyclonal Antibody
Catalog #: APRab11590



family.,

Research Area

Image Data



Western blot analysis of lysates from HCT116 cells, primary antibody was diluted at 1:1000, 4° over night

Note

For research use only.