

## Summary

<b>Production Name</b>	GOLT1A Rabbit Polyclonal Antibody
<b>Description</b>	Rabbit Polyclonal Antibody
<b>Host</b>	Rabbit
<b>Application</b>	IHC-P,IF-P,IF-F,ICC/IF,ELISA
<b>Reactivity</b>	Human,Mouse

## Performance

<b>Conjugation</b>	Unconjugated
<b>Modification</b>	Unmodified
<b>Isotype</b>	IgG
<b>Clonality</b>	Polyclonal
<b>Form</b>	Liquid
<b>Storage</b>	Store at 4°C short term. Aliquot and store at -20°C long term. Avoid freeze/thaw cycles.
<b>Buffer</b>	Liquid in PBS containing 50% glycerol, 0.5% BSA and 0.02% New type preservative N.
<b>Purification</b>	Affinity purification

## Immunogen

<b>Gene Name</b>	GOLT1A
<b>Alternative Names</b>	GOLT1A; GOT1B; Vesicle transport protein GOT1A; Golgi transport 1 homolog A; hGOT1b
<b>Gene ID</b>	127845.0
<b>SwissProt ID</b>	Q6ZVE7. The antiserum was produced against synthesized peptide derived from human GOLT1A. AA range:40-89

## Application

<b>Dilution Ratio</b>	IHC-P 1:100-1:300, ELISA 1:5000, IF-P/IF-F/ICC/IF 1:50-200
<b>Molecular Weight</b>	

## Background

**Product Name: GOLT1A Rabbit Polyclonal Antibody**  
**Catalog #: APRab11580**

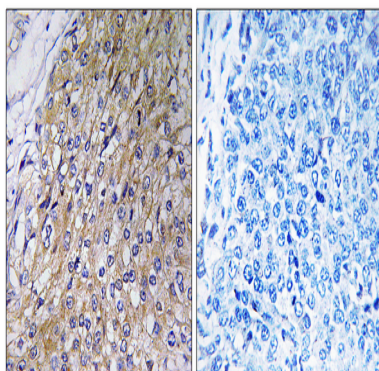
---



function:May be involved in fusion of ER-derived transport vesicles with the Golgi complex.,similarity:Belongs to the GOT1 family.,function:May be involved in fusion of ER-derived transport vesicles with the Golgi complex.,similarity:Belongs to the GOT1 family.,

## Research Area

## Image Data



Immunohistochemistry analysis of paraffin-embedded human breast carcinoma tissue, using GOLT1A Antibody. The picture on the right is blocked with the synthesized peptide.

## Note

For research use only.