

Summary

Production Name	GMF- γ Rabbit Polyclonal Antibody
Description	Rabbit Polyclonal Antibody
Host	Rabbit
Application	IHC-P,IF-P,IF-F,ICC/IF,ELISA
Reactivity	Human,Rat,Mouse

Performance

Conjugation	Unconjugated
Modification	Unmodified
Isotype	IgG
Clonality	Polyclonal
Form	Liquid
Storage	Store at 4°C short term. Aliquot and store at -20°C long term. Avoid freeze/thaw cycles.
Buffer	Liquid in PBS containing 50% glycerol, 0.5% BSA and 0.02% New type preservative N.
Purification	Affinity purification

Immunogen

Gene Name	GMFG
Alternative Names	Glia maturation factor gamma (GMF-gamma)
Gene ID	9535.0
SwissProt ID	O60234.Synthetic peptide from human protein at AA range: 1-50

Application

Dilution Ratio	IHC-P 1:50-200, ELISA 1:10000-20000, IF-P/IF-F/ICC/IF 1:50-200
Molecular Weight	

Background

similarity:Belongs to the actin-binding proteins ADF family. GMF subfamily.,similarity:Contains 1 ADF-H domain.,tissue

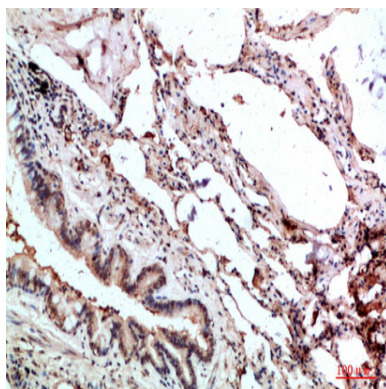
Product Name: GMF- γ Rabbit Polyclonal Antibody
Catalog #: APRab11534



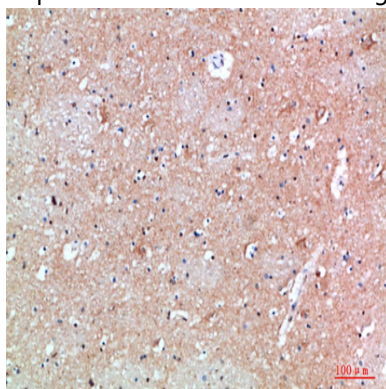
specificity:Expressed predominantly in lung, heart and placenta.,similarity:Belongs to the actin-binding proteins ADF family.
GMF subfamily.,similarity:Contains 1 ADF-H domain.,tissue specificity:Expressed predominantly in lung, heart and placenta.,

Research Area

Image Data



Immunohistochemical analysis of paraffin-embedded human-lung, antibody was diluted at 1:200



Immunohistochemical analysis of paraffin-embedded human-brain, antibody was diluted at 1:200

Note

For research use only.