

Product Name: GLI-1 Rabbit Polyclonal Antibody
Catalog #: APRab11462



Summary

Production Name	GLI-1 Rabbit Polyclonal Antibody
Description	Rabbit Polyclonal Antibody
Host	Rabbit
Application	WB,ELISA
Reactivity	Human,Mouse

Performance

Conjugation	Unconjugated
Modification	Unmodified
Isotype	IgG
Clonality	Polyclonal
Form	Liquid
Storage	Store at 4°C short term. Aliquot and store at -20°C long term. Avoid freeze/thaw cycles.
Buffer	Liquid in PBS containing 50% glycerol, 0.5% BSA and 0.02% New type preservative N.
Purification	Affinity purification

Immunogen

Gene Name	GLI1 GLI
Alternative Names	Zinc finger protein GLI1 (Glioma-associated oncogene) (Oncogene GLI)
Gene ID	2735.0
SwissProt ID	P08151. Synthesized peptide derived from human GLI-1. at AA range: 460-490

Application

Dilution Ratio	WB 1:500-2000, ELISA 1:10000-20000
Molecular Weight	120kDa

Background

This gene encodes a member of the Kruppel family of zinc finger proteins. The encoded transcription factor is activated by the sonic hedgehog signal transduction cascade and regulates stem cell proliferation. The activity and nuclear localization

Product Name: GLI-1 Rabbit Polyclonal Antibody
Catalog #: APRab11462

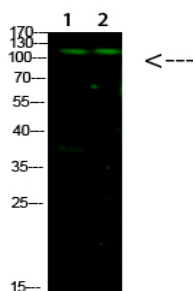


of this protein is negatively regulated by p53 in an inhibitory loop. Multiple transcript variants encoding different isoforms have been found for this gene. [provided by RefSeq, May 2009],disease:Defects in GLI1 may be a cause of breast cancer.,function:May regulate the transcription of specific genes during normal development. May play a role in craniofacial development and digital development, as well as development of the central nervous system and gastrointestinal tract. Mediates SHH signaling and thus cell proliferation and differentiation.,induction:Amplified in glioblastoma cells.,similarity:Belongs to the GLI C2H2-type zinc-finger protein family.,similarity:Contains 5 C2H2-type zinc fingers.,subcellular location:Tethered in the cytoplasm by binding to SUFU. Activation and translocation to the nucleus is promoted by interaction with STK36.,tissue specificity:Testis, myometrium and fallopian tube.,

Research Area

Hedgehog;Pathways in cancer;Basal cell carcinoma;

Image Data



Western Blot analysis of 1,mouse-liver 2,hela cells using primary antibody diluted at 1:1000 (4°C overnight) . Secondary antibody: Goat Anti-rabbit IgG IRDye 800 (diluted at 1:5000, 25°C, 1 hour)

Note

For research use only.