

**Product Name: GIDRP88 Rabbit Polyclonal Antibody**  
**Catalog #: AP Rab11440**



## Summary

<b>Production Name</b>	GIDRP88 Rabbit Polyclonal Antibody
<b>Description</b>	Rabbit Polyclonal Antibody
<b>Host</b>	Rabbit
<b>Application</b>	WB,IHC-P,IF-P,IF-F,ICC/IF,ELISA
<b>Reactivity</b>	Human,Mouse,Monkey

## Performance

<b>Conjugation</b>	Unconjugated
<b>Modification</b>	Unmodified
<b>Isotype</b>	IgG
<b>Clonality</b>	Polyclonal
<b>Form</b>	Liquid
<b>Storage</b>	Store at 4°C short term. Aliquot and store at -20°C long term. Avoid freeze/thaw cycles.
<b>Buffer</b>	Liquid in PBS containing 50% glycerol, 0.5% BSA and 0.02% New type preservative N.
<b>Purification</b>	Affinity purification

## Immunogen

<b>Gene Name</b>	R3HCC1L R3HCC1L; C10orf28; GIDRP88; R3H and coiled-coil domain-containing protein 1-like;
<b>Alternative Names</b>	Growth inhibition and differentiation-related protein 88; Putative mitochondrial space protein 32.1
<b>Gene ID</b>	27291.0
<b>SwissProt ID</b>	Q7Z5L2.The antiserum was produced against synthesized peptide derived from human GIDRP88. AA range:721-770

## Application

<b>Dilution Ratio</b>	WB 1:500-1:2000, IHC-P 1:100-1:300, ELISA 1:40000, IF-P/IF-F/ICC/IF 1:50-200
<b>Molecular Weight</b>	88kDa

**Product Name: GIDRP88 Rabbit Polyclonal Antibody**  
**Catalog #: AP Rab11440**

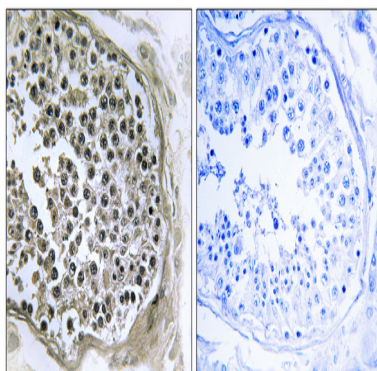


## Background

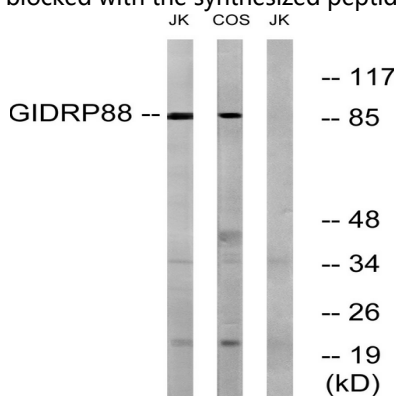
tissue specificity: Expressed in placenta, tissue specificity: Expressed in placenta,

## Research Area

## Image Data



Immunohistochemistry analysis of paraffin-embedded human testis tissue, using GIDRP88 Antibody. The picture on the right is blocked with the synthesized peptide.



Western blot analysis of lysates from Jurkat and COS cells, using GIDRP88 Antibody. The lane on the right is blocked with the synthesized peptide.

## Note

For research use only.