

Summary

Production Name	GHITM Rabbit Polyclonal Antibody
Description	Rabbit Polyclonal Antibody
Host	Rabbit
Application	WB,IHC-P,IF-P,IF-F,ICC/IF,ELISA
Reactivity	Human,Rat,Mouse

Performance

Conjugation	Unconjugated
Modification	Unmodified
Isotype	IgG
Clonality	Polyclonal
Form	Liquid
Storage	Store at 4°C short term. Aliquot and store at -20°C long term. Avoid freeze/thaw cycles.
Buffer	Liquid in PBS containing 50% glycerol, 0.5% BSA and 0.02% New type preservative N.
Purification	Affinity purification

Immunogen

Gene Name	GHITM
Alternative Names	GHITM; DERP2; MICS1; TMBIM5; My021; Growth hormone-inducible transmembrane protein; Dermal papilla-derived protein 2; Mitochondrial morphology and cristae structure 1; MICS1; Transmembrane BAX inhibitor motif-containing protein 5
Gene ID	27069.0
SwissProt ID	Q9H3K2.The antiserum was produced against synthesized peptide derived from human GHITM. AA range:31-80

Application

Dilution Ratio	WB 1:500-1:2000, IHC-P 1:100-1:300, ELISA 1:10000, IF-P/IF-F/ICC/IF 1:50-200
Molecular Weight	37kDa

Product Name: GHITM Rabbit Polyclonal Antibody
Catalog #: APRab11436

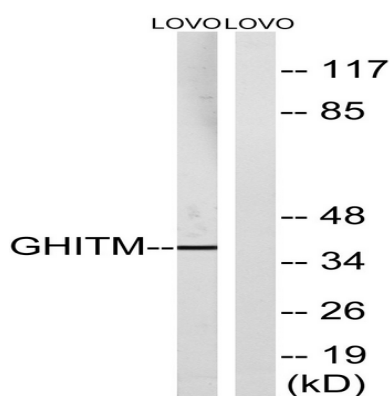


Background

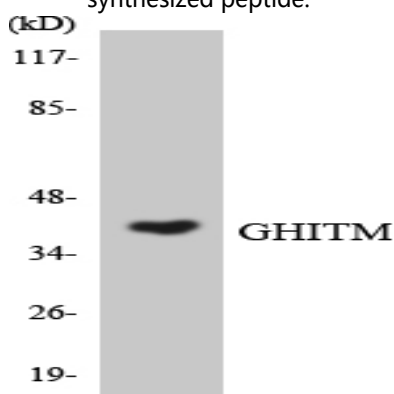
similarity:Belongs to the B11 family.,similarity:Belongs to the B11 family.,

Research Area

Image Data



Western blot analysis of lysates from LOVO cells, using GHITM Antibody. The lane on the right is blocked with the synthesized peptide.



Western blot analysis of the lysates from HepG2 cells using GHITM antibody.

Note

For research use only.