

**Product Name: GFR $\alpha$ -4 Rabbit Polyclonal Antibody**  
**Catalog #: APRab11419**

---



## Summary

<b>Production Name</b>	GFR $\alpha$ -4 Rabbit Polyclonal Antibody
<b>Description</b>	Rabbit Polyclonal Antibody
<b>Host</b>	Rabbit
<b>Application</b>	WB,ELISA
<b>Reactivity</b>	Human,Rat,Mouse

## Performance

<b>Conjugation</b>	Unconjugated
<b>Modification</b>	Unmodified
<b>Isotype</b>	IgG
<b>Clonality</b>	Polyclonal
<b>Form</b>	Liquid
<b>Storage</b>	Store at 4°C short term. Aliquot and store at -20°C long term. Avoid freeze/thaw cycles.
<b>Buffer</b>	Liquid in PBS containing 50% glycerol, 0.5% BSA and 0.02% New type preservative N.
<b>Purification</b>	Affinity purification

## Immunogen

<b>Gene Name</b>	GFRA4
<b>Alternative Names</b>	GFRA4; GDNF family receptor alpha-4; GDNF receptor alpha-4; GDNFR-alpha-4; GFR-alpha-4; Persephin receptor
<b>Gene ID</b>	64096.0
<b>SwissProt ID</b>	Q9GZZ7. The antiserum was produced against synthesized peptide derived from human GFRA4. AA range:141-190

## Application

<b>Dilution Ratio</b>	WB 1:500-1:2000, ELISA 1:10000.Not yet tested in other applications.
<b>Molecular Weight</b>	30kDa

## Background

---

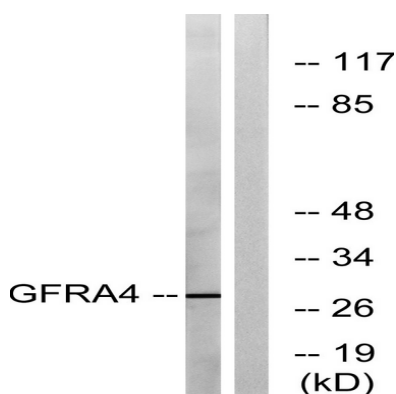
**Product Name: GFR $\alpha$ -4 Rabbit Polyclonal Antibody**  
**Catalog #: APRab11419**



The protein encoded by this gene is a member of the GDNF receptor family. It is a glycosylphosphatidylinositol(GPI)-linked cell surface receptor for persephin, and mediates activation of the RET tyrosine kinase receptor. This gene is a candidate gene for RET-associated diseases. Alternatively spliced transcript variants encoding different isoforms have been described for this gene. [provided by RefSeq, Jul 2008],alternative products:Additional isoforms seem to exist,function:Receptor for persephin. Mediates the GDNF-induced autophosphorylation and activation of the RET receptor. May be important in C-cell development and, in the postnatal development of the adrenal medulla.,similarity:Belongs to the GDNFR family.,tissue specificity:Predominantly expressed in the adult thyroid gland. Low levels also found in fetal adrenal and thyroid glands.,

## Research Area

## Image Data



Western blot analysis of lysates from HeLa cells, using GFRA4 Antibody. The lane on the right is blocked with the synthesized peptide.

## Note

For research use only.