

Summary

| | |
|------------------------|---|
| Production Name | GCS- α -1 Rabbit Polyclonal Antibody |
| Description | Rabbit Polyclonal Antibody |
| Host | Rabbit |
| Application | WB,CoIP,IHC-P,IF-P,IF-F,ICC/IF,ELISA |
| Reactivity | Human,Mouse,Rat |

Performance

| | |
|---------------------|--|
| Conjugation | Unconjugated |
| Modification | Unmodified |
| Isotype | IgG |
| Clonality | Polyclonal |
| Form | Liquid |
| Storage | Store at 4°C short term. Aliquot and store at -20°C long term. Avoid freeze/thaw cycles. |
| Buffer | Liquid in PBS containing 50% glycerol, 0.5% BSA and 0.02% New type preservative N. |
| Purification | Affinity purification |

Immunogen

| | |
|--------------------------|--|
| Gene Name | GUCY1A3 |
| Alternative Names | GUCY1A3; GUC1A3; GUCSA3; GUCY1A1; Guanylate cyclase soluble subunit alpha-3; GCS-alpha-3; GCS-alpha-1; Soluble guanylate cyclase large subunit |
| Gene ID | 2982.0 |
| SwissProt ID | Q02108.The antiserum was produced against synthesized peptide derived from human GCS-alpha-1. AA range:374-423 |

Application

| | |
|-------------------------|--|
| Dilution Ratio | WB 1:500-1:2000, IHC-P 1:100-1:300, ELISA 1:40000, IF-P/IF-F/ICC/IF 1:50-200 |
| Molecular Weight | 77kDa |

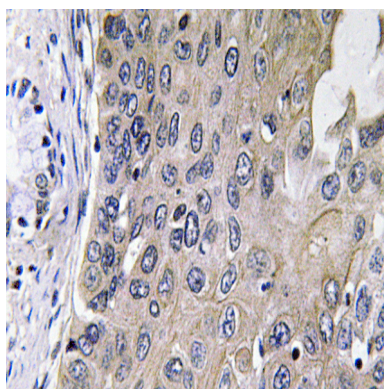
Background

Soluble guanylate cyclases are heterodimeric proteins that catalyze the conversion of GTP to 3',5'-cyclic GMP and pyrophosphate. The protein encoded by this gene is an alpha subunit of this complex and it interacts with a beta subunit to form the guanylate cyclase enzyme, which is activated by nitric oxide. Several transcript variants encoding a few different isoforms have been found for this gene. [provided by RefSeq, Jan 2012], catalytic activity: GTP = 3',5'-cyclic GMP + diphosphate., enzyme regulation: Activated by nitric oxide in the presence of magnesium or manganese ions., miscellaneous: There are two types of guanylate cyclases: soluble forms and membrane-associated receptor forms., similarity: Belongs to the adenylyl cyclase class-4/guanylyl cyclase family., similarity: Contains 1 guanylate cyclase domain., subunit: Heterodimer of an alpha and a beta chain.,

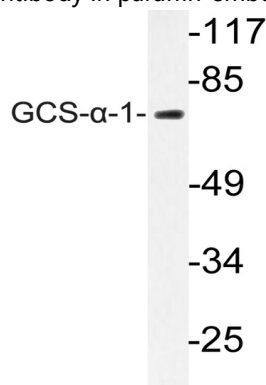
Research Area

Purine metabolism; Vascular smooth muscle contraction; Gap junction; Long-term depression;

Image Data

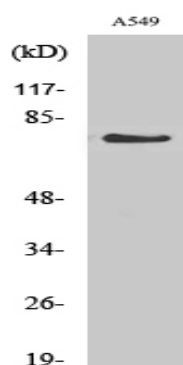


Immunohistochemistry analysis of GCS- α -1 antibody in paraffin-embedded human lung carcinoma tissue.



Western blot analysis of lysate from A549 cells, using GCS- α -1 antibody.

Product Name: GCS- α -1 Rabbit Polyclonal Antibody
Catalog #: APRab11374



Western Blot analysis of various cells using GCS- α -1 Polyclonal Antibody

Note

For research use only.