

Product Name: GCP6 Rabbit Polyclonal Antibody
Catalog #: APRab11368



Summary

Production Name	GCP6 Rabbit Polyclonal Antibody
Description	Rabbit Polyclonal Antibody
Host	Rabbit
Application	WB,IHC-P,IF-P,IF-F,ICC/IF,ELISA
Reactivity	Human,Rat,Mouse

Performance

Conjugation	Unconjugated
Modification	Unmodified
Isotype	IgG
Clonality	Polyclonal
Form	Liquid
Storage	Store at 4°C short term. Aliquot and store at -20°C long term. Avoid freeze/thaw cycles.
Buffer	Liquid in PBS containing 50% glycerol, 0.5% BSA and 0.02% New type preservative N.
Purification	Affinity purification

Immunogen

Gene Name	TUBGCP6
Alternative Names	TUBGCP6; GCP6; KIAA1669; Gamma-tubulin complex component 6; GCP-6
Gene ID	85378.0
SwissProt ID	Q96RT7.The antiserum was produced against synthesized peptide derived from human TUBGCP6. AA range:741-790

Application

Dilution Ratio	WB 1:500-1:2000, IHC-P 1:100-1:300, ELISA 1:20000, IF-P/IF-F/ICC/IF 1:50-200
Molecular Weight	200kDa

Background

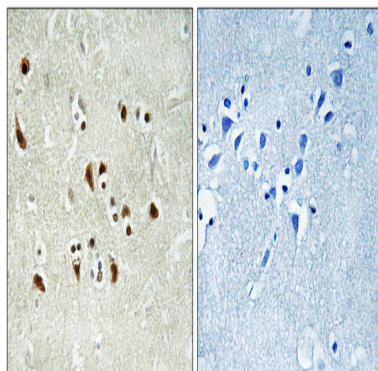
Product Name: GCP6 Rabbit Polyclonal Antibody
Catalog #: APRab11368



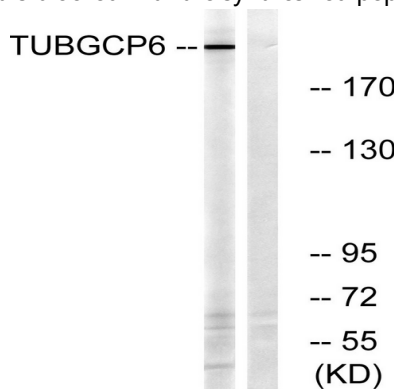
The protein encoded by this gene is part of a large multisubunit complex required for microtubule nucleation at the centrosome. [provided by RefSeq, Jul 2008],function:Gamma-tubulin complex is necessary for microtubule nucleation at the centrosome.,sequence caution:Intron retention.,similarity:Belongs to the GCP family.,subunit:Gamma-tubulin complex is composed of gamma-tubulin, GCP2, GCP3, GCP4, GCP5 and GCP6.,

Research Area

Image Data

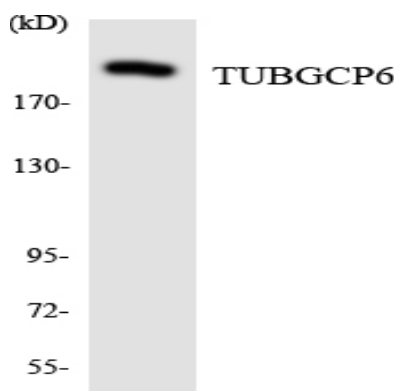


Immunohistochemistry analysis of paraffin-embedded human brain tissue, using TUBGCP6 Antibody. The picture on the right is blocked with the synthesized peptide.

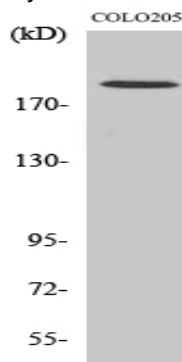


Western blot analysis of lysates from COLO cells, using TUBGCP6 Antibody. The lane on the right is blocked with the synthesized peptide.

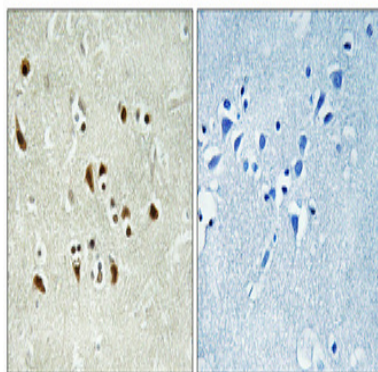
Product Name: GCP6 Rabbit Polyclonal Antibody
Catalog #: APRab11368



Western blot analysis of the lysates from HeLa cells using TUBGCP6 antibody.



Western Blot analysis of various cells using GCP6 Polyclonal Antibody diluted at 1: 1000



Immunohistochemical analysis of paraffin-embedded Human brain. Antibody was diluted at 1:100 (4°, overnight) . High-pressure and temperature Tris-EDTA, pH 8.0 was used for antigen retrieval. Negative control (right) obtained from antibody was pre-absorbed by immunogen peptide.

Note

For research use only.