

## Summary

<b>Production Name</b>	GCNT6 Rabbit Polyclonal Antibody
<b>Description</b>	Rabbit Polyclonal Antibody
<b>Host</b>	Rabbit
<b>Application</b>	WB,IF-P,IF-F,ICC/IF,ELISA
<b>Reactivity</b>	Human,Rat,Mouse

## Performance

<b>Conjugation</b>	Unconjugated
<b>Modification</b>	Unmodified
<b>Isotype</b>	IgG
<b>Clonality</b>	Polyclonal
<b>Form</b>	Liquid
<b>Storage</b>	Store at 4°C short term. Aliquot and store at -20°C long term. Avoid freeze/thaw cycles.
<b>Buffer</b>	Liquid in PBS containing 50% glycerol, 0.5% BSA and 0.02% New type preservative N.
<b>Purification</b>	Affinity purification

## Immunogen

<b>Gene Name</b>	GCNT6
<b>Alternative Names</b>	GCNT6; Beta-1; 3-galactosyl-O-glycosyl-glycoprotein beta-1,6-N-acetylglucosaminyltransferase 6
<b>Gene ID</b>	644378.0
<b>SwissProt ID</b>	Q5T4J0.The antiserum was produced against synthesized peptide derived from human GCNT6. AA range:201-250

## Application

<b>Dilution Ratio</b>	WB 1:500-1:2000, IF-P/IF-F/ICC/IF 1:200-1:1000, ELISA 1:40000.Not yet tested in other applications.
<b>Molecular Weight</b>	45kDa

**Product Name: GCNT6 Rabbit Polyclonal Antibody**  
**Catalog #: AP Rab11362**

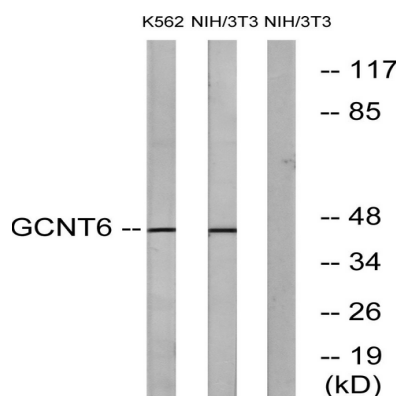


## Background

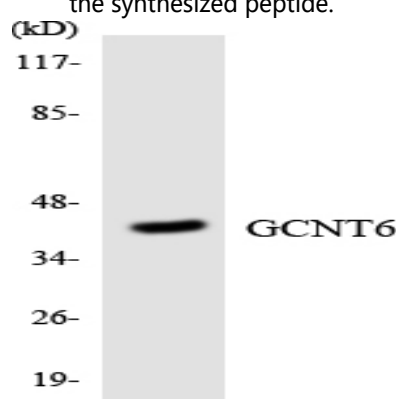
function:Glycosyltransferase.,pathway:Protein modification; protein glycosylation.,similarity:Belongs to the glycosyltransferase 14 family.,function:Glycosyltransferase.,pathway:Protein modification; protein glycosylation.,similarity:Belongs to the glycosyltransferase 14 family.,

## Research Area

## Image Data



Western blot analysis of lysates from NIH/3T3 and K562 cells, using GCNT6 Antibody. The lane on the right is blocked with the synthesized peptide.



Western blot analysis of the lysates from HeLa cells using GCNT6 antibody.

## Note

For research use only.