

Product Name: GBX2 Rabbit Polyclonal Antibody
Catalog #: APRab11339



Summary

Production Name	GBX2 Rabbit Polyclonal Antibody
Description	Rabbit Polyclonal Antibody
Host	Rabbit
Application	WB,ELISA
Reactivity	Human,Mouse

Performance

Conjugation	Unconjugated
Modification	Unmodified
Isotype	IgG
Clonality	Polyclonal
Form	Liquid
Storage	Store at 4°C short term. Aliquot and store at -20°C long term. Avoid freeze/thaw cycles.
Buffer	Liquid in PBS containing 50% glycerol, and 0.02% New type preservative N.
Purification	Affinity purification

Immunogen

Gene Name	GBX2
Alternative Names	
Gene ID	2637.0
SwissProt ID	P52951. Synthesized peptide derived from part region of human protein

Application

Dilution Ratio	WB 1:500-2000, ELISA 1:5000-20000
Molecular Weight	38kDa

Background

function:May act as a transcription factor for cell pluripotency and differentiation in the embryo.,similarity:Contains 1 homeobox DNA-binding domain.,function:May act as a transcription factor for cell pluripotency and differentiation in the

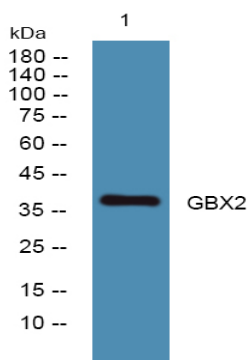
Product Name: GBX2 Rabbit Polyclonal Antibody
Catalog #: APRab11339



embryo.,similarity:Contains 1 homeobox DNA-binding domain.,

Research Area

Image Data



Western blot analysis of lysates from K562 cells, primary antibody was diluted at 1:1000, 4° over night

Note

For research use only.