

Product Name: GBDR1 Rabbit Polyclonal Antibody
Catalog #: APRab11324



Summary

Production Name	GBDR1 Rabbit Polyclonal Antibody
Description	Rabbit Polyclonal Antibody
Host	Rabbit
Application	WB,IHC-P,IF-P,IF-F,ICC/IF,ELISA
Reactivity	Human,Rat,Mouse

Performance

Conjugation	Unconjugated
Modification	Unmodified
Isotype	IgG
Clonality	Polyclonal
Form	Liquid
Storage	Store at 4°C short term. Aliquot and store at -20°C long term. Avoid freeze/thaw cycles.
Buffer	Liquid in PBS containing 50% glycerol, 0.5% BSA and 0.02% New type preservative N.
Purification	Affinity purification

Immunogen

Gene Name	UBAC1 UBAC1; GBDR1; KPC2; UBADC1; Ubiquitin-associated domain-containing protein 1;
Alternative Names	UBA domain-containing protein 1; E3 ubiquitin-protein ligase subunit KPC2; Glialblastoma cell differentiation-related protein 1; Kip1 ubiquitination-promoting com
Gene ID	10422.0
SwissProt ID	Q9BSL1.The antiserum was produced against synthesized peptide derived from human UBAC1. AA range:91-140

Application

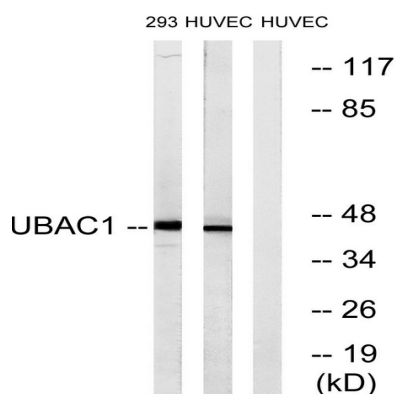
Dilution Ratio	WB 1:500-1:2000, IHC-P 1:100-1:300, ELISA 1:10000, IF-P/IF-F/ICC/IF 1:50-200
Molecular Weight	45kDa

Background

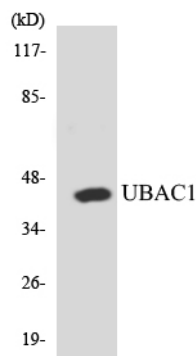
function:Non-catalytic subunit of the KPC complex that acts as E3 ubiquitin-protein ligase. Required for poly-ubiquitination and proteasome-mediated degradation of CDKN1B during G1 phase of the cell cycle.,pathway:Protein modification; protein ubiquitination.,similarity:Contains 1 STI1 domain.,similarity:Contains 1 ubiquitin-like domain.,similarity:Contains 2 UBA domains.,subunit:Component of the KPC complex composed of RNF123/KPC1 and UBAC1/KPC2. Interacts with RNF123 via its N-terminal domain. Interacts with the proteasome via its N-terminal domain.,tissue specificity:Ubiquitous.,function:Non-catalytic subunit of the KPC complex that acts as E3 ubiquitin-protein ligase. Required for poly-ubiquitination and proteasome-mediated degradation of CDKN1B during G1 phase of the cell cycle.,pathway:Protein modification; protein ubiquitination.,similarity:Contains 1 STI1 domain.,similarity:Contains 1 ubiquitin-like domain.,similarity:Contains 2 UBA domains.,subunit:Component of the KPC complex composed of RNF123/KPC1 and UBAC1/KPC2. Interacts with RNF123 via its N-terminal domain. Interacts with the proteasome via its N-terminal domain.,tissue specificity:Ubiquitous.,

Research Area

Image Data



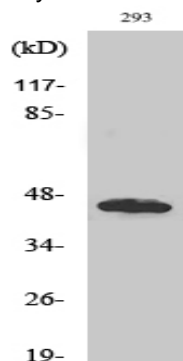
Western blot analysis of lysates from 293 and HUVEC cells, using UBAC1 Antibody. The lane on the right is blocked with the synthesized peptide.



Product Name: GBDR1 Rabbit Polyclonal Antibody
Catalog #: APRab11324



Western blot analysis of the lysates from HT-29 cells using UBAC1 antibody.



Western Blot analysis of various cells using GBDR1 Polyclonal Antibody diluted at 1: 500

Note

For research use only.