

Summary

Production Name	GATA-5 Rabbit Polyclonal Antibody
Description	Rabbit Polyclonal Antibody
Host	Rabbit
Application	WB,IHC-P,IF-P,IF-F,ICC/IF,ELISA
Reactivity	Human,Mouse

Performance

Conjugation	Unconjugated
Modification	Unmodified
Isotype	IgG
Clonality	Polyclonal
Form	Liquid
Storage	Store at 4°C short term. Aliquot and store at -20°C long term. Avoid freeze/thaw cycles.
Buffer	Liquid in PBS containing 50% glycerol, 0.5% BSA and 0.02% New type preservative N.
Purification	Affinity purification

Immunogen

Gene Name	GATA5
Alternative Names	GATA5; Transcription factor GATA-5; GATA-binding factor 5
Gene ID	140628.0
SwissProt ID	Q9BWX5.The antiserum was produced against synthesized peptide derived from human GATA-5. AA range:244-293

Application

Dilution Ratio	WB 1:500-1:2000, IHC-P 1:100-1:300, ELISA 1:10000, IF-P/IF-F/ICC/IF 1:50-200
Molecular Weight	45kDa

Background

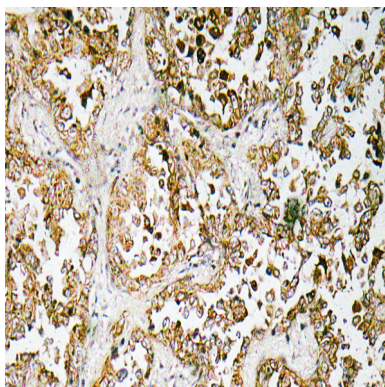
Product Name: GATA-5 Rabbit Polyclonal Antibody
Catalog #: APRab11315



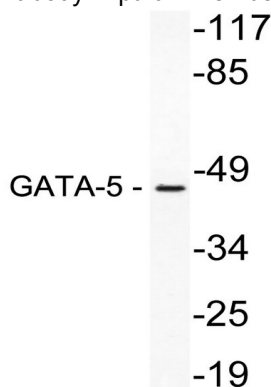
The protein encoded by this gene is a transcription factor that contains two GATA-type zinc fingers. The encoded protein is known to bind to hepatocyte nuclear factor-1alpha (HNF-1alpha), and this interaction is essential for cooperative activation of the intestinal lactase-phlorizin hydrolase promoter. In other organisms, similar proteins may be involved in the establishment of cardiac smooth muscle cell diversity. [provided by RefSeq, Jul 2008],function: Binds to the functionally important CEF-1 nuclear protein binding site in the cardiac-specific slow/cardiac troponin C transcriptional enhancer. May play an important role in the transcriptional program(s) that underlies smooth muscle cell diversity.,similarity: Contains 2 GATA-type zinc fingers.,

Research Area

Image Data

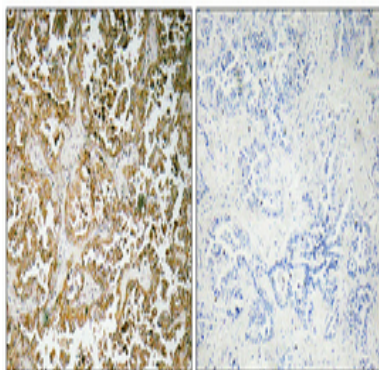


Immunohistochemistry analysis of GATA-5 antibody in paraffin-embedded human lung carcinoma tissue.



Western blot analysis of lysate from NIH/3T3 cells, using GATA-5 antibody.

Product Name: GATA-5 Rabbit Polyclonal Antibody
Catalog #: APRab11315



Immunohistochemical analysis of paraffin-embedded Human lung cancer. Antibody was diluted at 1:100 (4°,overnight) . High-pressure and temperature Tris-EDTA,pH8.0 was used for antigen retrieval. Negative contrl (right) obtaned from antibody was pre-absorbed by immunogen peptide.

Note

For research use only.