

Summary

Production Name	Gas6 Rabbit Polyclonal Antibody
Description	Rabbit Polyclonal Antibody
Host	Rabbit
Application	WB,IHC-P,IF-P,IF-F,ICC/IF,ELISA
Reactivity	Human,Rat,Mouse

Performance

Conjugation	Unconjugated
Modification	Unmodified
Isotype	IgG
Clonality	Polyclonal
Form	Liquid
Storage	Store at 4°C short term. Aliquot and store at -20°C long term. Avoid freeze/thaw cycles.
Buffer	Liquid in PBS containing 50% glycerol, 0.5% BSA and 0.02% New type preservative N.
Purification	Affinity purification

Immunogen

Gene Name	GAS6
Alternative Names	GAS6; AXLLG; Growth arrest-specific protein 6; GAS-6; AXL receptor tyrosine kinase ligand
Gene ID	2621.0
SwissProt ID	Q14393.The antiserum was produced against synthesized peptide derived from human GAS6. AA range:291-340

Application

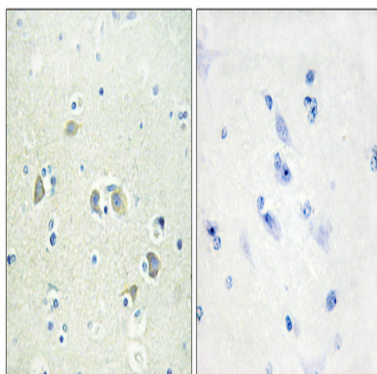
Dilution Ratio	WB 1:500-1:2000, IHC-P 1:100-1:300, ELISA 1:40000, IF-P/IF-F/ICC/IF 1:50-200
Molecular Weight	75kDa

Background

This gene encodes a gamma-carboxyglutamic acid (Gla)-containing protein thought to be involved in the stimulation of cell proliferation. This gene is frequently overexpressed in many cancers and has been implicated as an adverse prognostic marker. Elevated protein levels are additionally associated with a variety of disease states, including venous thromboembolic disease, systemic lupus erythematosus, chronic renal failure, and preeclampsia. [provided by RefSeq, Aug 2014],function:Ligand for tyrosine-protein kinase receptors AXL, TYRO3 and MER whose signaling is implicated in cell growth and survival, cell adhesion and cell migration. Plays a role in thrombosis by amplifying platelet aggregation and secretion in response to known agonists.,PTM:Gamma-carboxyglutamate residues are formed by vitamin K dependent carboxylation. These residues are essential for the binding of calcium.,PTM:Isoform 1 is proteolytically processed after secretion to yield a N-terminal 36 kDa protein and a C-terminal 50 kDa protein including the laminin G-like domains which activates AXL.,similarity:Contains 1 Gla (gamma-carboxy-glutamate) domain.,similarity:Contains 2 laminin G-like domains.,similarity:Contains 4 EGF-like domains.,subunit:Heterodimer and heterotetramer with AXL.,tissue specificity:Plasma. Isoform 1 and isoform 2 are widely expressed. Isoform 1 is the predominant form in spleen.,

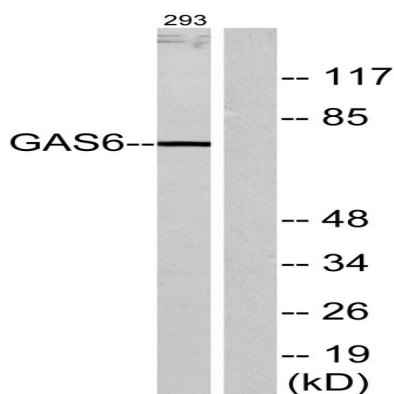
Research Area

Image Data

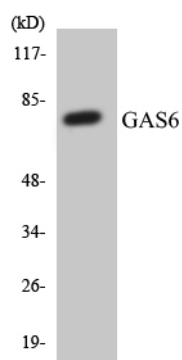


Immunohistochemistry analysis of paraffin-embedded human brain tissue, using GAS6 Antibody. The picture on the right is blocked with the synthesized peptide.

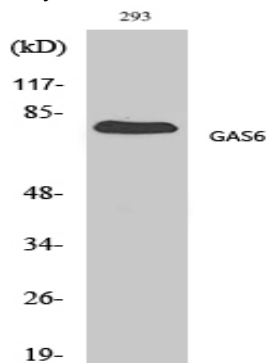
Product Name: Gas6 Rabbit Polyclonal Antibody
Catalog #: APRab11302



Western blot analysis of lysates from 293 cells, using GAS6 Antibody. The lane on the right is blocked with the synthesized peptide.

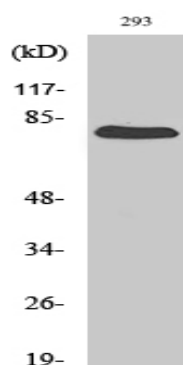


Western blot analysis of the lysates from HT-29 cells using GAS6 antibody.



Western Blot analysis of various cells using Gas6 Polyclonal Antibody diluted at 1: 500

Product Name: Gas6 Rabbit Polyclonal Antibody
Catalog #: APRab11302



Western Blot analysis of 293 cells using Gas6 Polyclonal Antibody diluted at 1 : 500

Note

For research use only.