

**Product Name: GALK1 Rabbit Polyclonal Antibody**  
**Catalog #: APRab11279**



## Summary

<b>Production Name</b>	GALK1 Rabbit Polyclonal Antibody
<b>Description</b>	Rabbit Polyclonal Antibody
<b>Host</b>	Rabbit
<b>Application</b>	WB,IHC-P,IF-P,IF-F,ICC/IF,ELISA
<b>Reactivity</b>	Human,Mouse,Rat

## Performance

<b>Conjugation</b>	Unconjugated
<b>Modification</b>	Unmodified
<b>Isotype</b>	IgG
<b>Clonality</b>	Polyclonal
<b>Form</b>	Liquid
<b>Storage</b>	Store at 4°C short term. Aliquot and store at -20°C long term. Avoid freeze/thaw cycles.
<b>Buffer</b>	Liquid in PBS containing 50% glycerol, 0.5% BSA and 0.02% New type preservative N.
<b>Purification</b>	Affinity purification

## Immunogen

<b>Gene Name</b>	GALK1
<b>Alternative Names</b>	GALK1; GALK; Galactokinase; Galactose kinase
<b>Gene ID</b>	2584.0
<b>SwissProt ID</b>	P51570.The antiserum was produced against synthesized peptide derived from human GALK1. AA range:1-50

## Application

<b>Dilution Ratio</b>	WB 1:500-1:2000, IHC-P 1:100-1:300, IF-P/IF-F/ICC/IF 1:200-1:1000, ELISA 1:10000.Not yet tested in other applications.
<b>Molecular Weight</b>	45kDa

**Product Name: GALK1 Rabbit Polyclonal Antibody**  
**Catalog #: APRab11279**



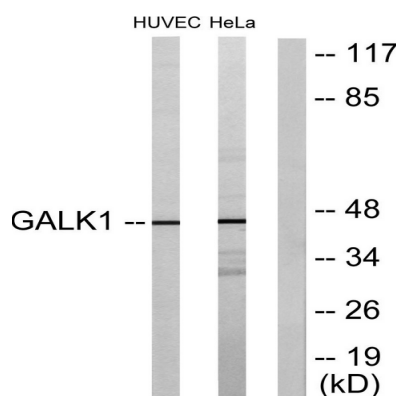
## Background

Galactokinase is a major enzyme for the metabolism of galactose and its deficiency causes congenital cataracts during infancy and presenile cataracts in the adult population. [provided by RefSeq, Jul 2008],catalytic activity:ATP + D-galactose = ADP + alpha-D-galactose 1-phosphate.,disease:Defects in GALK1 are the cause of galactosemia II [MIM:230200]. It is an autosomal recessive deficiency characterized by congenital cataracts during infancy and presenile cataracts in the adult population. The cataracts are secondary to accumulation of galactitol in the lenses.,function:Major enzyme for galactose metabolism.,pathway:Carbohydrate metabolism; galactose metabolism.,similarity:Belongs to the GHMP kinase family.,similarity:Belongs to the GHMP kinase family. Galk subfamily.,

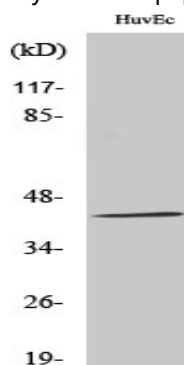
## Research Area

Galactose metabolism;Amino sugar and nucleotide sugar metabolism;

## Image Data



Western blot analysis of lysates from HUVEC and HeLa cells, using GALK1 Antibody. The lane on the right is blocked with the synthesized peptide.



Western Blot analysis of various cells using GALK1 Polyclonal Antibody diluted at 1: 1000

## Note

For research use only.

**Product Name: GALK1 Rabbit Polyclonal Antibody**  
**Catalog #: APRab11279**

---

